



INSTALLATION INSTRUCTIONS

DirectAC Universal Voltage (120-277V) Engine Retrofit Kit

TJTUNV015ACxxxB

Reference spec sheet for full part numbers



LED LIGHT ENGINE APPLICATION PROGRAM MANUAL FOR LED LIGHT ENGINE KIT INSTALLATION

1.0 INSTALLATION WARNINGS

1. "THIS PRODUCT MUST BE INSTALLED IN ACCORDANCE WITH THE APPLICABLE INSTALLATION CODE BY A PERSON FAMILIAR WITH THE CONSTRUCTION AND OPERATION OF THE PRODUCT AND HAZARDS INVOLVED."
2. "WARNING - Risk of fire or electric shock. LED Retrofit kit installation requires knowledge of luminaire electrical systems. If not qualified, do not attempt installation. Contact a qualified electrician."
3. "WARNING - Risk of fire or electric shock. Install this kit only in the luminaires that has the construction features and dimensions shown in the photographs and/or drawings and where the input rating of the retrofit kit does not exceed the input rating of the luminaire."
4. "WARNING - To prevent wiring damage or abrasion, do not expose wiring to edges of sheet metal or other sharp objects."
5. "WARNING –Risk of fire or electric shock. Luminaire wiring and electrical parts may be damaged when drilling for installation of LED retrofit kit. Check for enclosed wiring and components."
6. "CAUTION – RISK OF FIRE. CONSULT A QUALIFIED ELECTRICIAN TO ENSURE CORRECT BRANCH CIRCUIT CONDUCTOR."
7. "THE RETROFIT KIT IS ACCEPTED AS A COMPONENT OF A LUMINAIRE WHERE THE SUITABILITY OF THE COMBINATION SHALL BE DETERMINED BY THE AUTHORITIES HAVING JURISDICTION."
8. Do not make or alter any open holes in an enclosure of wiring or electrical components during kit installation.

1.0 AVERTISSEMENTS D'INSTALLATION

1. CE PRODUIT DOIT ÊTRE INSTALLÉ SELON LE CODE D'INSTALLATION PERTINENT, PAR UNE PERSONNE QUI CONNAÎT BIEN LE PRODUIT ET SON FONCTIONNEMENT AINSI QUE LES RISQUES INHÉRENTS.
2. AVERTISSEMENT - Risque d'incendie ou de choc électrique. L'installation de ce nécessaire de modernisation exige une personne familière avec la construction et le fonctionnement du système électrique du luminaire et des risques associés. Toute personne qui n'est pas qualifiée ne doit faire aucune tentative d'installation et doit contacter une personne qualifiée.
3. AVERTISSEMENT - Risque d'incendie ou de choc électrique. N'installer ce nécessaire que dans les luminaires dont les caractéristiques de construction et les dimensions sont conforme à celles illustrées dans les photos et/ou les dessins et dont la puissance d'entrée nominale du nécessaire de modernisation ne dépasse pas celle du luminaire.
4. AVERTISSEMENT - Afin de prévenir l'endommagement ou l'abrasion des câbles, éviter tout contact entre ces derniers et le bord d'un objet tranchant tel qu'une tôle.
5. "AVERTISSEMENT -Risque d'incendie ou de choc électrique. Le câblage du luminaire et les pièces électriques peuvent être endommagés lors du forage pour l'installation d'un kit de reconditionnement LED. Vérifiez le câblage et les composants inclus. "
6. ATTENTION – RISQUE D'INCENDIE, CONSULTER UN ÉLECTRICIEN QUALIFIÉ POUR VOUS ASSURER QUE LES CONDUCTEURS DE LA DÉRIVATION SONT ADÉQUATS.
7. LE NÉCESSAIRE DE MODERNISATION EST ACCEPTÉ À TITRE DE COMPOSANT D'UN LUMINAIRE LORSQUE LA PERTINENCE DE LA COMBINAISON DOIT ÊTRE DÉTERMINÉE PAR PAR LES AUTORITÉS COMPÉTENTES.
8. Ne faites pas ou ne modifiez aucun trou ouvert dans une enceinte de câblage ou de composants électriques pendant l'installation du kit

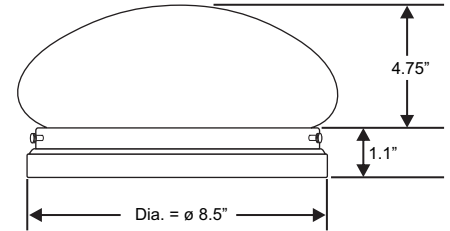
2.0 ORIGINAL LUMINAIRE DIMENSIONS

Original Luminaire

Mfr: Portfolio - Model: GL2301-WHES-I



Minimum Luminaire Dimensions

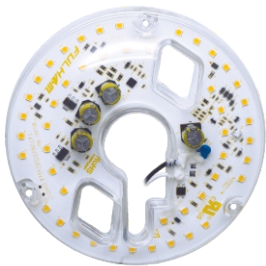


- Remove all the original luminaire parts, hardware, lamp, ballast, and socket in order to begin the retrofit.
- Original luminaire diffuser and original ground wire will need to be kept for this retrofit.
- This Universal Voltage DirectAC Engine Kit can be retrofitted into any surface wall or ceiling luminaire with a similar shape and diameter/height greater or equal to the minimum dimensions described above, or volume greater or equal to 173.92 cubic inches.

NOTE: Wire on dedicated lighting branch circuit. Do not wire on same branch circuit as motors, heating elements, inductive type loads or heavy machinery which may introduce spikes, noise and other abnormalities onto the Line. Doing so may result in damage to the unit or abnormal lighting conditions.

3.0 RETROFIT KIT COMPONENTS

Retrofit kit components will be provided as listed below:



Direct AC LED Engine



Mounting Hardware

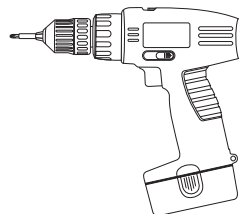


Input Power Connector

This luminaire has been modified to operate LED lamps. Do not attempt to install or operate incandescent / fluorescent lamps in this luminaire.

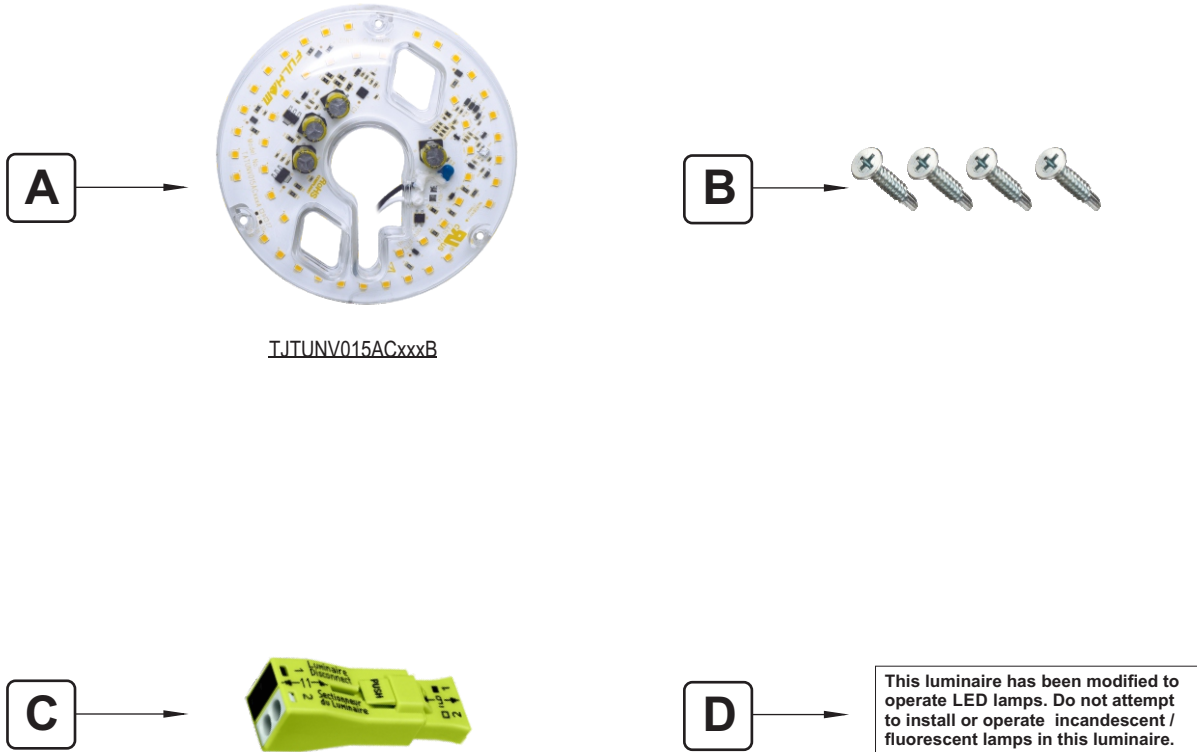
Retrofit Label

4.0 RECOMMENDED TOOLS (Not Included)



Power Drill W/ Philips Bit

5.0 RETROFIT KIT DESCRIPTION



ITEM	DESCRIPTION	QTY
A.	Direct AC LED Engine	1
B.	6-20 X 5/8" Flat Head Self Drilling Screws	4
C.	Input Power Connector	1
D.	Retrofit Label	1

6.0 RETROFIT KIT ASSEMBLY

1. Start by removing the original lamp, ballast and socket from the luminaire see figure 1.
NOTE: The original luminaire ground wire will need to be kept for this retrofit.



Figure 1

2. Center the DirectAC Engine (A) in the luminaire so that the line voltage cables are aligned with the flared hole found in the luminaire. See figure 2.

NOTE: LED Engine must make direct contact with the back plate when installed in order to provide sufficient heat sinking to properly manage thermals for safety and warranty purposes. The insulation film on the back of the engine should never be removed.

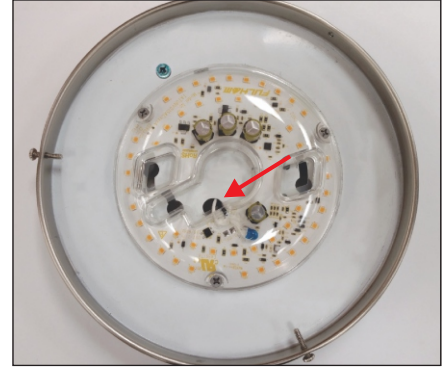


Figure 2

3. Use the supplied self-drilling screws (B) to attach the DirectAC Engine (A) to the luminaire's housing. See figure 3.

NOTE: All screws provided must be used to ensure good thermal contact to surface.

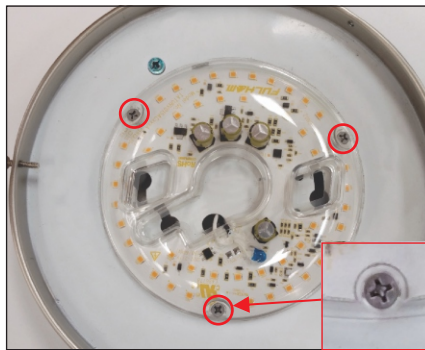


Figure 3

4. Feed line voltage cables from the DirectAC Engine (A) through the flared hole found in the luminaire. See figure 4.

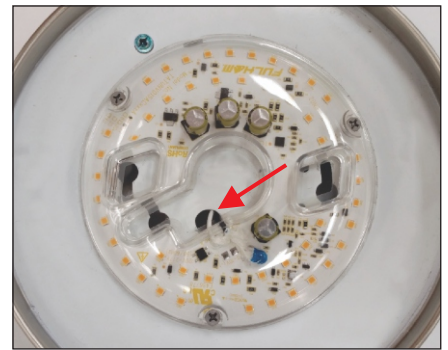


Figure 4

5. Place the provided Retrofit Label (E) on the inner areas of the luminaire where DirectAC Engine (A) was just installed. Label must be clearly visible and should not be obscured by line voltage cables. See figure 5 and Illustration 1.

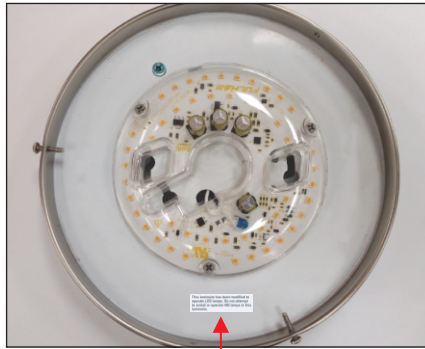


Figure 5

6. Completed assembly should look like figure 5.



Figure 6

7. Luminaire is now ready to be installed. Please see below for instructions on connecting line voltage to the luminaire.

8. Re-attach and secure the lens once installation is completed, retrofit should look like figure 6.

This luminaire has been modified to operate LED lamps. Do not attempt to install or operate incandescent / fluorescent lamps in this luminaire.

Connecting Power to the DirectAC Engine:

- 1) Connect the green wire (Ground) from the luminaire to the Ground that is being fed by the power source. Connect these two wires by using a wire connector with a minimum 18AWG rating.
- 2) Connect the white wire (Neutral) from the DirectAC Engine to the Neutral being fed by the power source. Connect these two wires by using a wire connector with a minimum 18AWG rating.
- 3) Connect the Black wire (Line) from DirectAC Engine to the Line being fed by the power source. Connect these two wires by using a wire connector with a minimum 18AWG rating.

7.0 WARRANTY

- Please refer to DirectAC Engine kit spec sheet for warranty information