

Features

- Support DALI-2 dimming
- Soft dimming and flicker-free at any brightness
- Dimming range 1~100%,support multiple lights dimming
- Standby power input<0.5W, meets the requirements of ErP certification
- High PF, high efficiency, low THD
- SELV and Class I design, suitable for use inside of the light
- IP20 protection grade, indoor use
- Nominal life-time up to 100,000 h

Interfaces

- DALI-2(DALI-2 DT6)

Functions

- Support central emergency application (dimming normal in DC input)
- Support self-contained emergency application
- Protective features (short-circuit, overload, no-load protection)

Suitable for lights

- Suitable for CV strip lights, CV linear lights, floor lights, three-proof lights, etc

Typical applications

- LED indoor lighting
- LED office lighting
- LED commercial lighting

| Model | Input voltage | Output power | Output voltage | Output current | Dimension |
|------------------|---------------|--------------|----------------|----------------|--------------|
| T1A1240024V-150E | 200-240VAC | 144.0W | 24VDC | 6A | L355*36*23mm |





T1A1240024V-150E

SPECIFICATIONS



- DALI 2.0 DT6 Constant Voltage LED Driver
- Output Wattage : 144W Max
- Flicker Free: O/P Ripple current < 10%
- Output voltage 24Vdc
- Linear CRCA Cabinet
- Suitable For Dry Locations
- Application:
 - Suitable for CV Strips, Linear Lights
 - Floor lights, three profile lights etc.

General Specifications

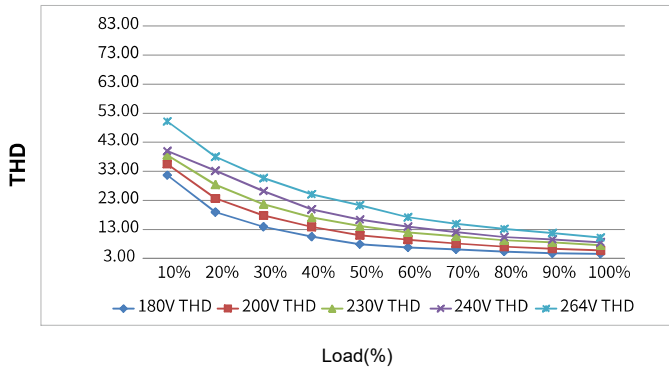
| | |
|-------------------------------------|---|
| Rated Input Voltage | 200-240Vac,50/60Hz |
| Operating Input Voltage Range | 180-264Vac,50/60Hz |
| Input Current | <1.0A @ 230Vac |
| Input Power | 166W |
| Power Factor | >0.95 @ 230Vac/Full Load |
| THD | <10% @ 230Vac/Full Load |
| Efficiency (Typical) | 90% |
| Driver Type | Constant Voltage DALI 2.0 |
| Output Current | 6A |
| Output Voltage | 24Vdc +/- 5% |
| Output Power (Max) | 144W |
| Number of Output Channels | 1 Channel |
| Output Type | Class I |
| Dimming Controller Type | DALI 2.0 |
| Ambient Operating Temperature Range | -10°C to 50°C |
| Max. Case Temperature | 90°C |
| Input Surge Protection | 2KV |
| Protections | Input Over Current : Non Resettable (Fuse) Output Short Circuit : Auto Recovery (HICCCUP Mode) Output Open Circuit : Auto Recovery (HICCCUP Mode) Output Overload : YES Over Temperature : NA |
| Complies to Standards | EN61347-1, EN61347-2-13, En62384, En55015, EN61000-3-2, EN61000-3-3 EN61000-4-2,3,4,5,6,8,11, EN61547 |
| Dali Standards | IEC62386-101, IEC62386-102, IEC62386-207 |
| Withstand Voltage | I/P-O/P:3750Vac, I/P-FG:1750Vac, O/P-FG:500Vac |
| Leakage Current | <0.7mA @ 240Vac |
| Isolation resistance | I/P-O/P:100MΩ / 500Vdc / 25°C / 70% RH |
| Life | 50,000 Hours @ Tc 75°C |
| Approvals / Class | SELV Equivalent |
| Warranty | 3 Years |
| Weight | 0.415 Kg |

Note :

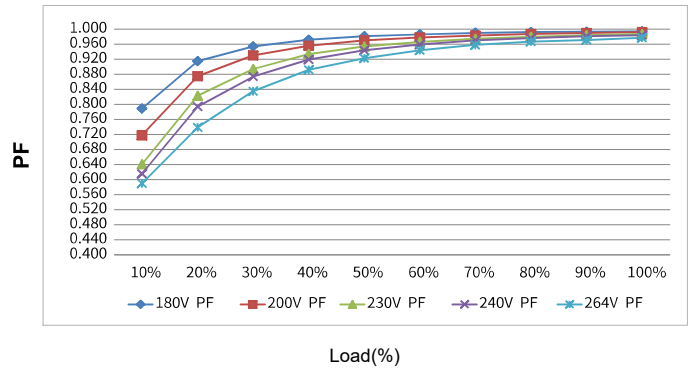
- Suitable for indoor application only
- Hot plug-in is not supported.
- Max. torque at the clamping screw: 0.5 Nm / M4

Fulham extends a limited warranty only to the original purchaser or to the first user for a period of **03 years @ Tc 75°C** from the date of manufacture when properly installed and operated under normal conditions of use. For complete terms and conditions, please reference the Fulham Product Catalog (www.fulham.com). Due to a program of continuous improvement, Fulham reserves the right to make modifications or variations in design or construction to the equipment described. © Fulham Company Limited, All Rights Reserved.

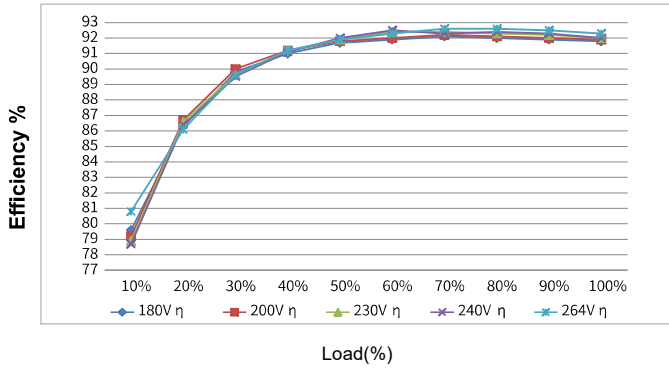
Total harmonic distortion vs Load characteristic curve



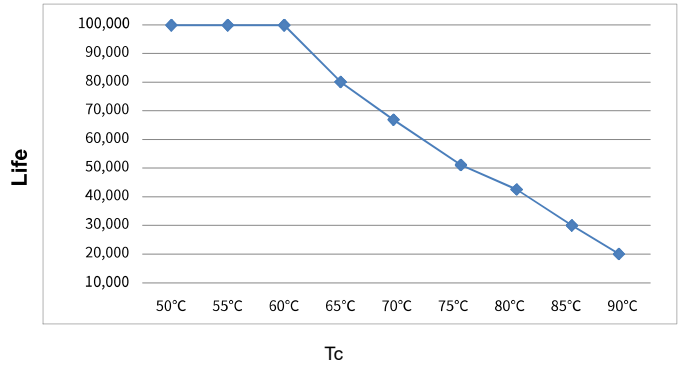
Power Factor vs LOAD Characteristic curve



Efficiency vs Load characteristic curve



Life vs Tc curve



Fulham extends a limited warranty only to the original purchaser or to the first user for a period of **03 years @ Tc 75°C** from the date of manufacture when properly installed and operated under normal conditions of use. For complete terms and conditions, please reference the Fulham Product Catalog (www.fulham.com). Due to a program of continuous improvement, Fulham reserves the right to make modifications or variations in design or construction to the equipment described. © Fulham Company Limited, All Rights Reserved.

DALI dimming application

Wiring diagram



Activating DALI control mode

- After installation according to the wiring diagram of DALI control application, the driver will automatically switch to the DALI control mode after receiving any DALI command.

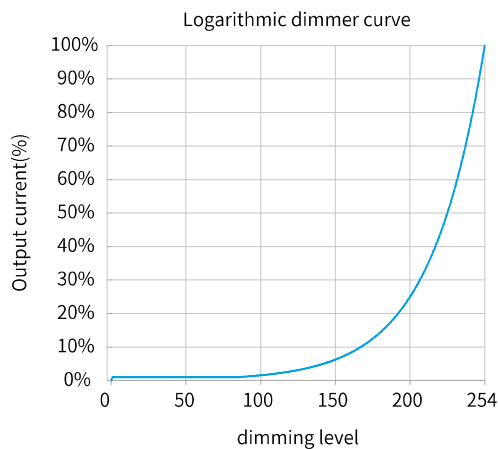
Remarks:

- Standard DALI control line voltage range: 9.5V to 22.5V, type 16V.
- The two DALI control lines polarity-reversible.
- Max. 64 DALI drivers per DALI control line.
- The maximum distance length of the DALI control line is 300m at $2 \times 1.5\text{mm}^2$.
- DALI bus can be wired together with any mains voltage cables, but separate wiring is recommended.

Wiring distance vs cable size

| Cable size | Distance |
|---------------------------------|----------|
| $2 \times 0.50\text{mm}^2$ | max.100m |
| $2 \times 0.75\text{mm}^2$ | max.150m |
| $2 \times 1.00\text{mm}^2$ | max.200m |
| $\geq 2 \times 1.50\text{mm}^2$ | max.300m |

Dimming curve



Remarks: The dimming curve can be selected by DALI configuration. The default is logarithmic dimming curve.

Fulham extends a limited warranty only to the original purchaser or to the first user for a period of **03 years @ Tc 75°C** from the date of manufacture when properly installed and operated under normal conditions of use. For complete terms and conditions, please reference the Fulham Product Catalog (www.fulham.com). Due to a program of continuous improvement, Fulham reserves the right to make modifications or variations in design or construction to the equipment described. © Fulham Company Limited, All Rights Reserved.

PUSH dimming application

Wiring diagram



Activating PUSH control mode

- After installation according to the wiring diagram of PUSH dimming application, short press the PUSH switch 3 times within 3 seconds, the driver will automatically switch to PUSH dimming mode.

Remarks:

Max.50driversperPUSHcontrolline.

Turn on or turn off: short press push switch for 0.2-1s.

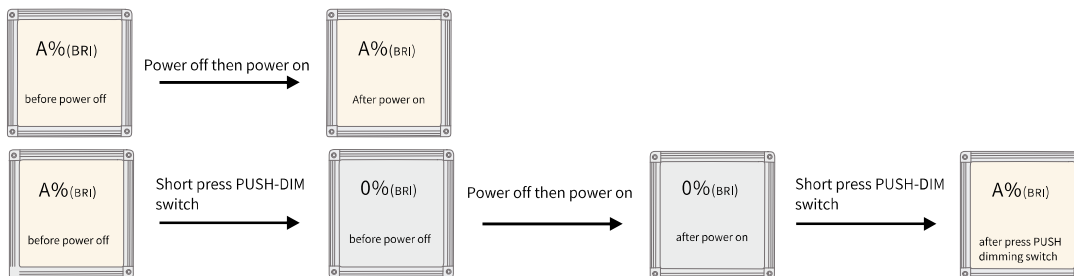
Dimming: long press push switch for 1-5s.

Power on status:

- After power on,the light state will be the same as the last dimming level.

- If the light is on before the power is turned on,after turning the power back on, the brightness will be the same as the last time.

- If the light is off before the power is turned off, the light will be turned off after the power is turned back on. You need to press the PUSH-DIM dimming switch for a short time to turn on the light. The brightness after lighting will be the same as the last time.



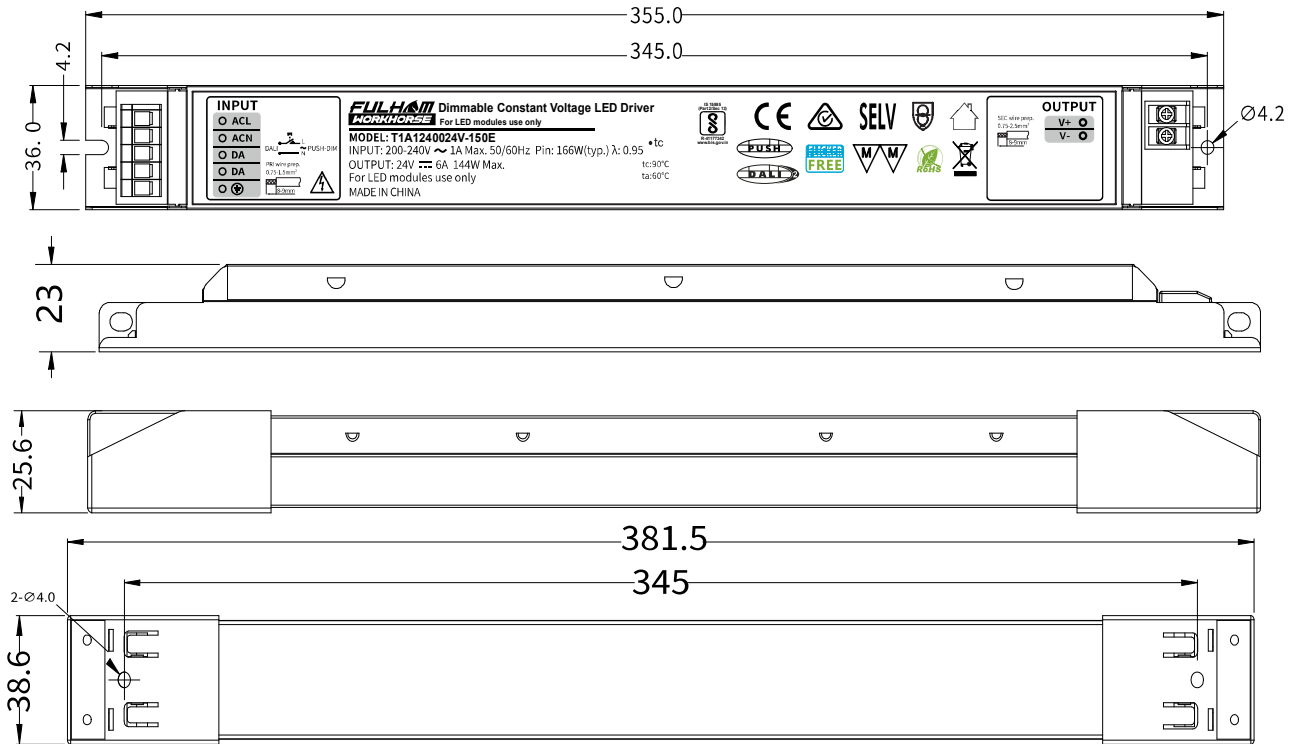
Multiple lights synchronize control operation

- method 1: Step 1:long press the PUSH-DIM switch,confirm each light is on.
 Step 2:short press the PUSH-DIM switch,confirm each light is off.
 Step 3:long press the PUSH-DIM switch,confirm each light is from darkest to brightest and all the lights are synchronous.

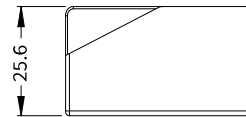
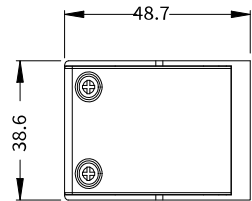
method 2: - Long press the PUSH-DIM dimming switch for more than 15s, all drivers will output 100% brightness.

Fulham extends a limited warranty only to the original purchaser or to the first user for a period of 03 years @ Tc 35°C from the date of manufacture when properly installed and operated under normal conditions of use. For complete terms and conditions, please reference the Fulham Product Catalog (www.fulham.com). Due to a program of continuous improvement, Fulham reserves the right to make modifications or variations in design or construction to the equipment described. © Fulham Company Limited, All Rights Reserved.

Mechanical Data :



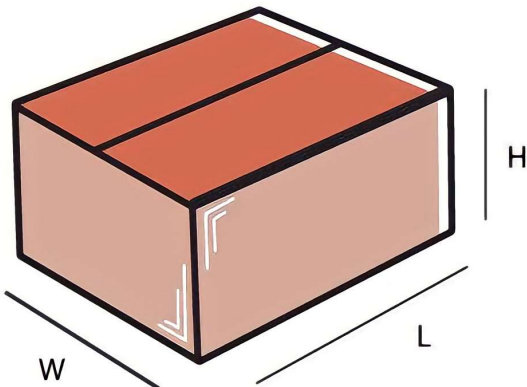
Cable Clamp Model No: [FH-CC003B](#)



Tolerance=±0.5mm

Note : All Dimensions are in mm.

Packaging



Master carton

| OUTER DIMENSION | | |
|-----------------|--------------|----------|
| L | W | H |
| 395mm | 355mm | 160mm |
| Net Weight | Gross Weight | QUANTITY |
| 9.96 kg | 11.2 kg | 24 pc. |

Installation Instructions:

Connect Wires as per details given on the Driver Screen. Keep proper ventilation around the LED Driver and do not stack any object on it. Also a 10-15 cm clearance must be kept when the adjacent device is a heat source. Do not exceed the declared Hot spot temperature(Tc max) under any circumstances.

Fulham extends a limited warranty only to the original purchaser or to the first user for a period of **03 years @ Tc 75°C** from the date of manufacture when properly installed and operated under normal conditions of use. For complete terms and conditions, please reference the Fulham Product Catalog (www.fulham.com). Due to a program of continuous improvement, Fulham reserves the right to make modifications or variations in design or construction to the equipment described. © Fulham Company Limited, All Rights Reserved.