



Features

- Support DALI-2 dimming
- Soft dimming and flicker-free at any brightness
- Dimming range 1~100%,support multiple lights dimming
- Standby power input<0.5W, meets the requirements of ErP certification
- High PF, high efficiency, low THD
- SELV and Class I design, suitable for use inside of the light
- IP20 protection grade, indoor use
- Nominal life-time up to 100,000 h

Interfaces

- DALI-2(DALI-2 DT6)

Functions

- Support central emergency application (dimming normal in DC input)
- Support self-contained emergency application
- Protective features (short-circuit, overload, no-load protection)

Suitable for lights

- Suitable for CV strip lights, CV linear lights, floor lights, three-proof lights, etc

Typical applications

- LED indoor lighting
- LED office lighting
- LED commercial lighting

Model	Input voltage	Output power	Output voltage	Output current	Dimension
T1A1240048V-100E	200-240VAC	100W	48V	2A	L355*30*21mm



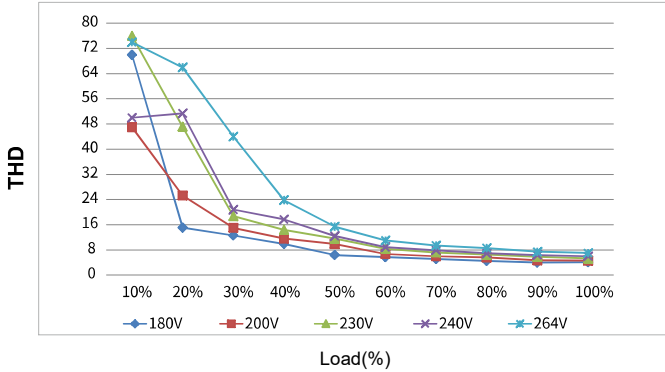
- **DALI-2 DT6 Constant Voltage LED Driver**
- **Output Wattage : 100W Max**
- **Flicker Free: O/P Ripple current < 10%**
- **Output voltage 48Vdc**
- **Linear CRCA Cabinet**
- **Suitable For Dry Locations**
- **Application:**
- Suitable for CV Strips, Linear Lights
Floor lights, three profile lights etc.

General Specifications

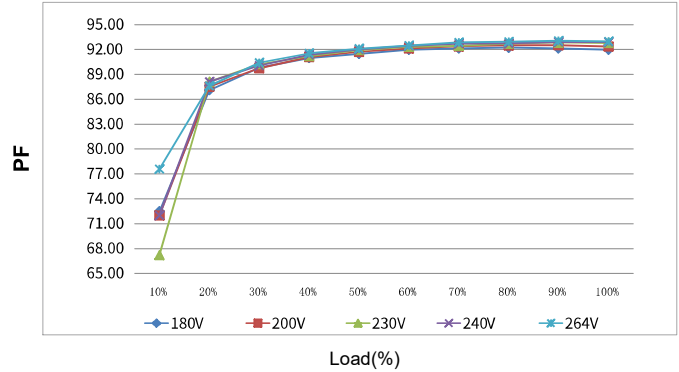
Rated Input Voltage	200-240Vac,50/60Hz
Operating Input Voltage Range	180-264Vac,50/60Hz
Input Current	<0.7A @ 200Vac
Input Power (Typical)	109W
Power Factor	>0.95 @ 230Vac/Full Load
THD	<10% @ 230Vac/Full Load
Efficiency (Typical)	≥91%
Driver Type	Constant Voltage DALI-2
Output Current (Typical)	2A
Output Voltage	48Vdc +/- 5%
Output Power (Typical)	100W
Number of Output Channels	1 Channel
Output Type	Class I
Dimming Controller Type	DALI-2
Ambient Operating Temperature Range	-10°C to 50°C
Max. Case Temperature	95°C
Input Surge Protection	2KV
Protections	Input Over Current : Non Resettable (Fuse) Output Short Circuit : Auto Recovery (HICCUP Mode) Output Open Circuit : Auto Recovery (HICCUP Mode) Output Overload : YES Over Temperature : NA
Complies to Standards	EN61347-1, EN61347-2-13, EN62384, EN55015, EN61000-3-2, EN61000-3-3 EN61000-4-2,3,4,5,6,8,11, EN61547
Dali Standards	IEC62386-101, IEC62386-102, IEC62386-207
Withstand Voltage	I/P-O/P:3750Vac, I/P-FG:1750Vac, O/P-FG:500Vac
Leakage Current	<0.7mA @ 240Vac
Isolation resistance	I/P-O/P:100MΩ / 500Vdc / 25°C / 70% RH
Life	Nominal life time upto 1,00,000 Hours
Approvals / Class	SELV Equivalent
Warranty	5 Years
Weight	0.310 Kg

Note : Suitable for indoor application only

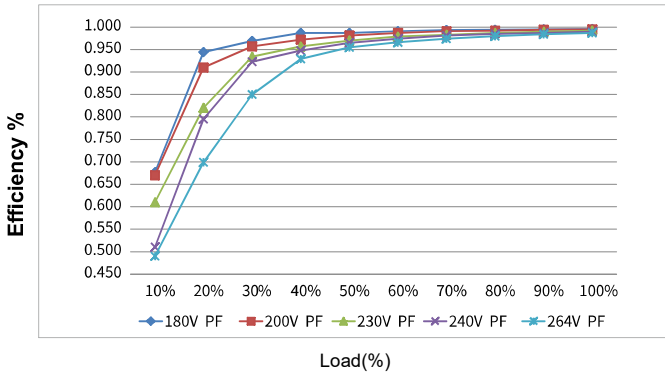
Total harmonic distortion vs Load characteristic curve



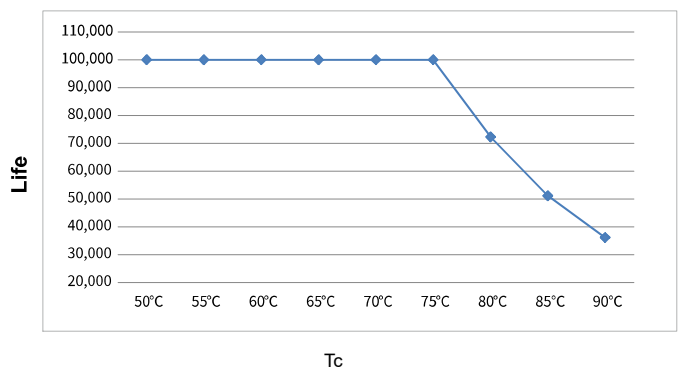
Power Factor vs LOAD Characteristic curve



Efficiency vs Load characteristic curve



Life vs Tc curve



Fulham extends a limited warranty only to the original purchaser or to the first user for a period of **05 years @ Tc 95°C** from the date of manufacture when properly installed and operated under normal conditions of use. For complete terms and conditions, please reference the Fulham Product Catalog (www.fulham.com). Due to a program of continuous improvement, Fulham reserves the right to make modifications or variations in design or construction to the equipment described. © Fulham Company Limited, All Rights Reserved.

DALI dimming application

Wiring diagram



Activating DALI control mode

- After installation according to the wiring diagram of DALI control application, the driver will automatically switch to the DALI control mode after receiving any DALI command.

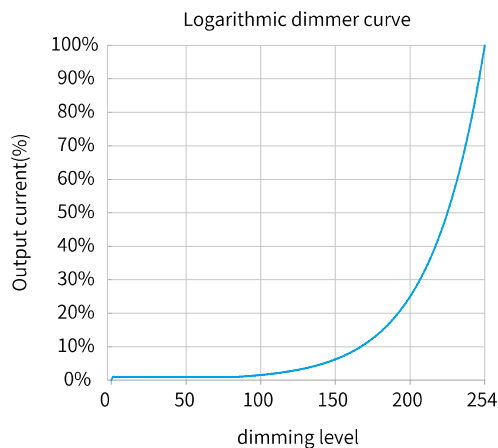
Remarks:

- Standard DALI control line voltage range: 9.5V to 22.5V, type 16V.
- The two DALI control lines polarity-reversible.
- Max. 64 DALI drivers per DALI control line.
- The maximum distance length of the DALI control line is 300m at 2 × 1.5mm².
- DALI bus can be wired together with any mains voltage cables, but separate wiring is recommended.

Wiring distance vs cable size

Cable size	Distance
2 × 0.50mm ²	max.100m
2 × 0.75mm ²	max.150m
2 × 1.00mm ²	max.200m
≥ 2 × 1.50mm ²	max.300m

Dimming curve



Remarks: The dimming curve can be selected by DALI configuration. The default is logarithmic dimming curve.

Fulham extends a limited warranty only to the original purchaser or to the first user for a period of **05 years @ Tc 95°C** from the date of manufacture when properly installed and operated under normal conditions of use. For complete terms and conditions, please reference the Fulham Product Catalog (www.fulham.com). Due to a program of continuous improvement, Fulham reserves the right to make modifications or variations in design or construction to the equipment described. © Fulham Company Limited, All Rights Reserved.

PUSH dimming application

Wiring diagram



Activating PUSH control mode

- After installation according to the wiring diagram of PUSH dimming application, short press the PUSH switch 3 times within 3 seconds, the driver will automatically switch to PUSH dimming mode.

Remarks:

Max.50driversperPUSHcontrolline.

Turn on or turn off: short press push switch for 0.2-1s.

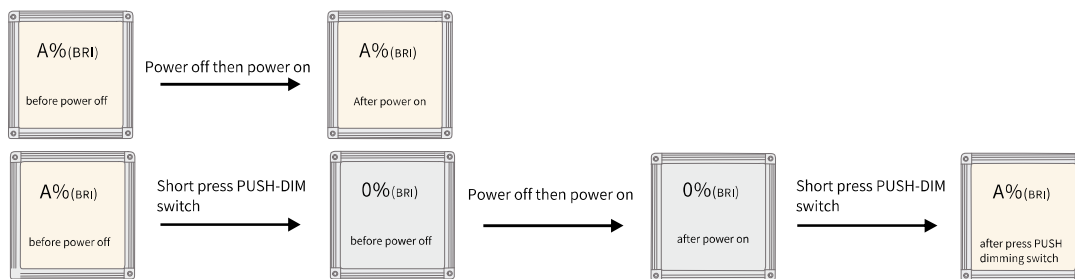
Dimming: long press push switch for 1-5s.

Power on status:

- After power on,the light state will be the same as the last dimming level.

- If the light is on before the power is turned on,after turning the power back on, the brightness will be the same as the last time.

- If the light is off before the power is turned off, the light will be turned off after the power is turned back on. You need to press the PUSH-DIM dimming switch for a short time to turn on the light. The brightness after lighting will be the same as the last time.



Multiple lights synchronize control operation

method 1: Step 1:long press the PUSH-DIM switch,confirm each light is on.

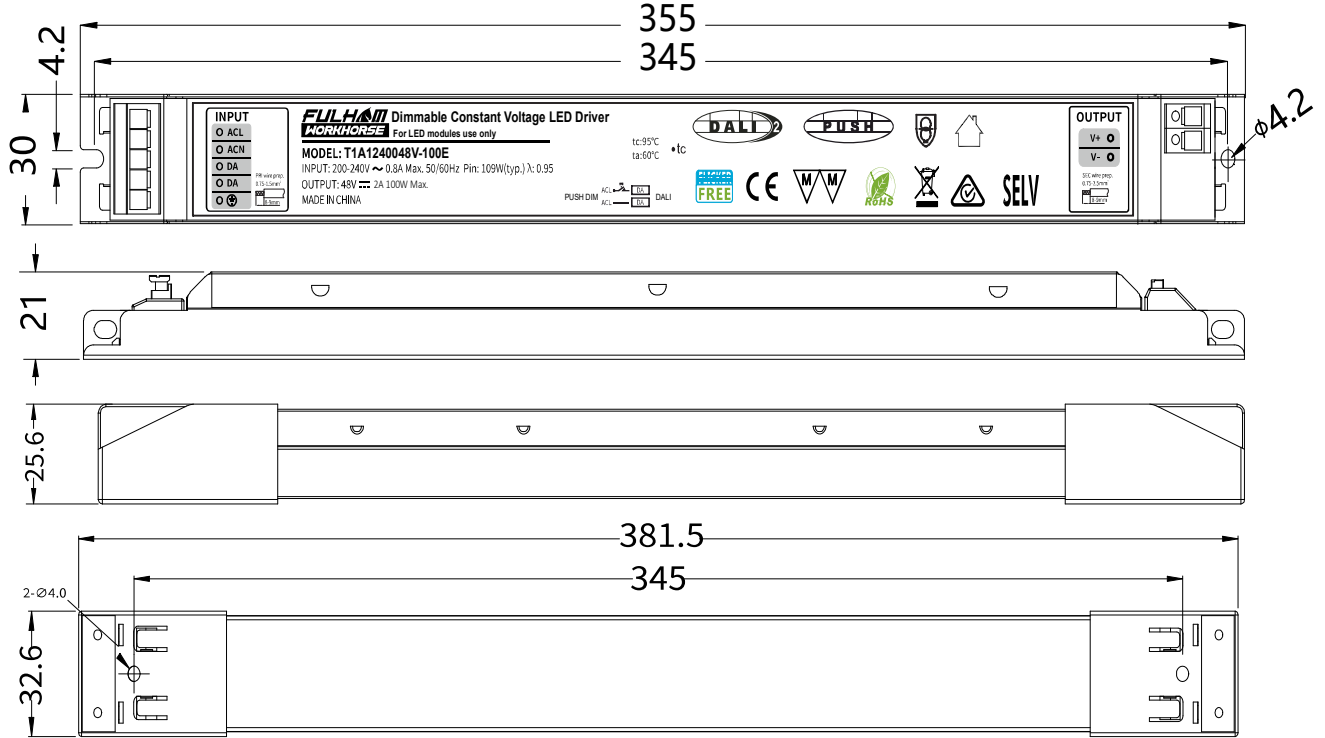
Step 2:short press the PUSH-DIM switch,confirm each light is off.

Step 3:long press the PUSH-DIM switch,confirm each light is from darkest to brightest and all the lights are synchronous.

method 2: - Long press the PUSH-DIM dimming switch for more than 15s, all drivers will output 100% brightness.

Fulham extends a limited warranty only to the original purchaser or to the first user for a period of **05 years @ Tc 95°C** from the date of manufacture when properly installed and operated under normal conditions of use. For complete terms and conditions, please reference the Fulham Product Catalog (www.fulham.com). Due to a program of continuous improvement, Fulham reserves the right to make modifications or variations in design or construction to the equipment described. © Fulham Company Limited, All Rights Reserved.

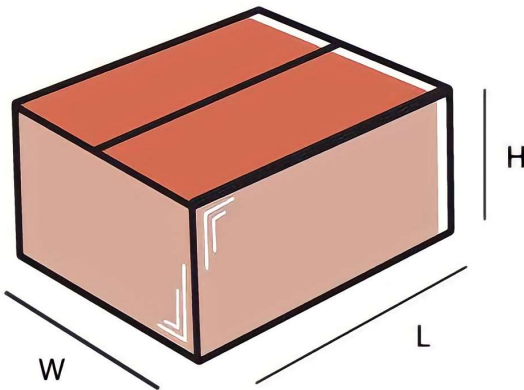
Mechanical Data :



Note : All Dimensions are in mm.

Tolerance=±0.5mm

Packaging



Master carton

OUTER DIMENSION		
L	W	H
395mm	355mm	140mm
Net Weight	Gross Weight	QUANTITY
8.62 kg	9.77 kg	28 pc.

Installation Instructions:

Connect Wires as per details given on the Driver Screen. Keep proper ventilation around the LED Driver and do not stack any object on it. Also a 10-15 cm clearance must be kept when the adjacent device is a heat source. Do not exceed the declared Hot spot temperature(Tc max) under any circumstances.

Fulham extends a limited warranty only to the original purchaser or to the first user for a period of **05 years @ Tc 95°C** from the date of manufacture when properly installed and operated under normal conditions of use. For complete terms and conditions, please reference the Fulham Product Catalog (www.fulham.com). Due to a program of continuous improvement, Fulham reserves the right to make modifications or variations in design or construction to the equipment described. © Fulham Company Limited, All Rights Reserved.