

## Features

- Support DALI-2 dimming mode
- 10-level current output can be realized by DIP-switch
- Soft dimming and flicker-free at any brightness
- Dimming range 1~100%, output current accuracy 1%
- Standby power input<0.5W, meets the requirements of ErP certification
- High PF, high efficiency, low THD
- Independent input and output strain relief, stronger wiring
- Intelligent LED hot-plug protection function
- SELV and Class II design, suitable for use outside of the light
- Passed ENEC-TUV,CE,RCM,CCC,DALI-2 and other certifications
- IP20 protection grade, indoor use
- Nominal life-time up to 50,000 h

## Interfaces

- DALI-2(DALI-2 DT6)

## Functions

- Support central emergency application (dimming normal in DC input)
- Support self-contained emergency application
- Protective features (short-circuit,no-load, hot plug-in protection )

## Suitable for lights

- Suitable for lights with independent drivers such as downlights, spotlights, panel lights, etc
- Not suitable for lights with built-in drivers

## Typical applications

- LED indoor lighting
- LED office lighting
- LED commercial lighting



- DALI-2 Constant Current LED Driver
- Multiple current selection through dip switch.
- Output Current: 250 - 700mA
- Flicker Free: O/P Ripple current < 10%
- Compact Housing
- Output Wattage : 30W Max
- Output voltage range of 3-42Vdc
- Inbuilt Cable Clamp for Independent Installation
- Suitable For Dry Locations
- Application
  - Suitable for Downlight
  - Spot Lights, Led Panels

## General Specifications

Rated Input Voltage	200-240Vac,50/60Hz
Operating Input Voltage Range	180-264Vac,50/60Hz
Input Current	<0.2 @ 230Vac
Input Power	33.7W
Power Factor	>0.95 @ 230Vac/Full Load, >90 @ 230Vac/>50% Load
THD	<15% @ 230Vac/Full Load, THD <20% @ 230Vac/>50% Load
Efficiency (Typical)	87%
Driver Type	Constant Current DALI-2
Output Current	700mA ±5%, 650mA ±5%, 600mA ±5%, 550mA ±5%, 500mA ±5%, 450mA ±5%, 400mA ±10%, 350mA ±10%, 300mA ±10%, 250mA ±10% *Refer DIP switch Table for O/P current selection
Output Voltage Range	3-42Vdc
Output Power	29.4W
Number of Output Channels	1 Channel
Output Type	Class II
Dimming Controller Type	DALI-2
Ambient Operating Temperature Range	-20°C to 45°C
Max. Case Temperature	75°C
Input Surge Protection	2KV
Protections	Input Over Current : Non Resettable (Fuse) Output Short Circuit : Auto Recovery (HICCUP Mode) Output Open Circuit : Auto Recovery (HICCUP Mode) Output Overload : YES Over Temperature : Auto Recovery (HICCUP Mode)
Safety Standards	EN61347-1/2-13, GB19510.1/14, EN62384, IEEEE1789
Withstand Voltage	I/P-O/P:3750Vac
Leakage Current	<0.7mA @ 230Vac
Isolation resistance	I/P-O/P:100MΩ / 500Vdc / 25°C / 70% RH
Life	50,000 Hours @ Tc 70°C
Approvals / Class	SELV Equivalent
Warranty	3 Years
Weight	0.150 Kg

Note : Suitable for indoor application only

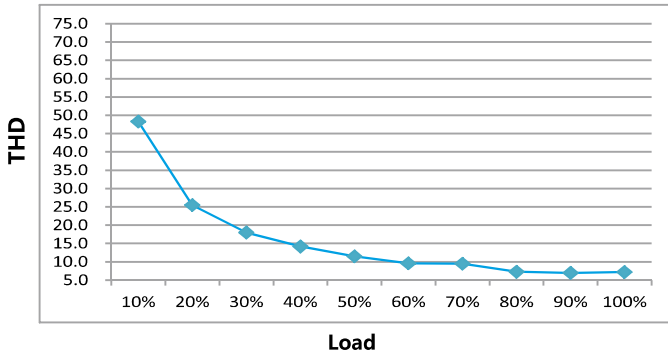
Fulham extends a limited warranty only to the original purchaser or to the first user for a period of **03 years @ Tc 70°C** from the date of manufacture when properly installed and operated under normal conditions of use. For complete terms and conditions, please reference the Fulham Product Catalog ([www.fulham.com](http://www.fulham.com)). Due to a program of continuous improvement, Fulham reserves the right to make modifications or variations in design or construction to the equipment described. © Fulham Company Limited, All Rights Reserved.

### DIP Switch Chart :

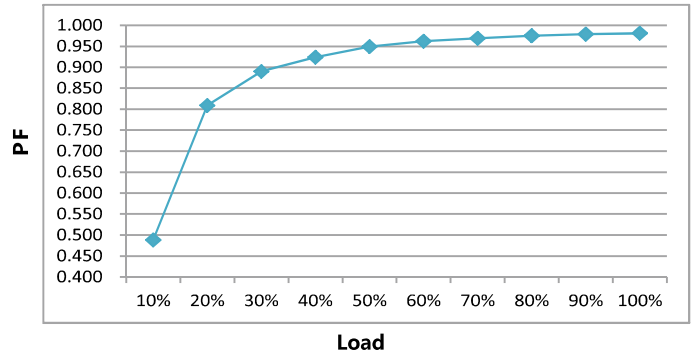
Remark: ★ this current is factory default.  
 - this Switch is off.

PIN typ.	Irated	Output Voltage	1	2	3	4
12.7W	250mA	42VDC	-	ON	ON	ON
14.9W	300mA	42VDC	ON	-	ON	ON
17.4W	350mA	42VDC	-	-	ON	ON
19.5W	400mA	42VDC	-	ON	-	ON
21.9W	450mA	42VDC	-	-	-	ON
24.3W	500mA	42VDC	ON	ON	ON	-
26.5W	550mA	42VDC	-	-	ON	-
28.9W	600mA	42VDC	-	ON	-	-
31.3W	650mA	42VDC	ON	-	-	-
33.7W	700mA ★	42VDC	-	-	-	-

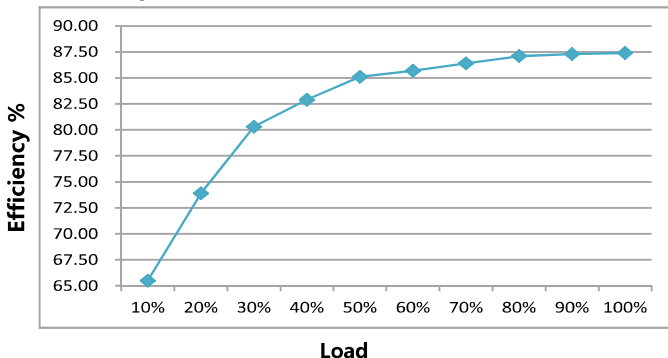
THD vs. Load



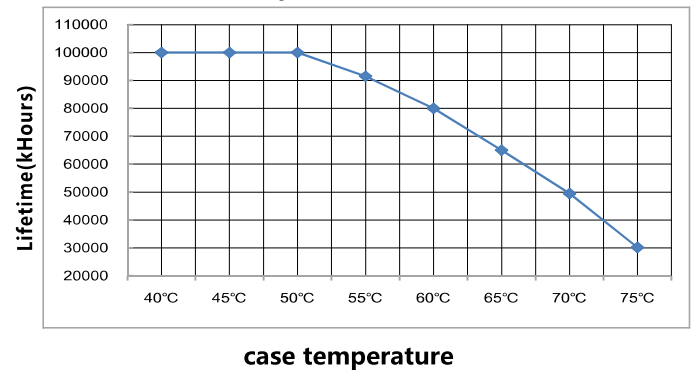
Power factor vs. Load



Efficiency vs. Load



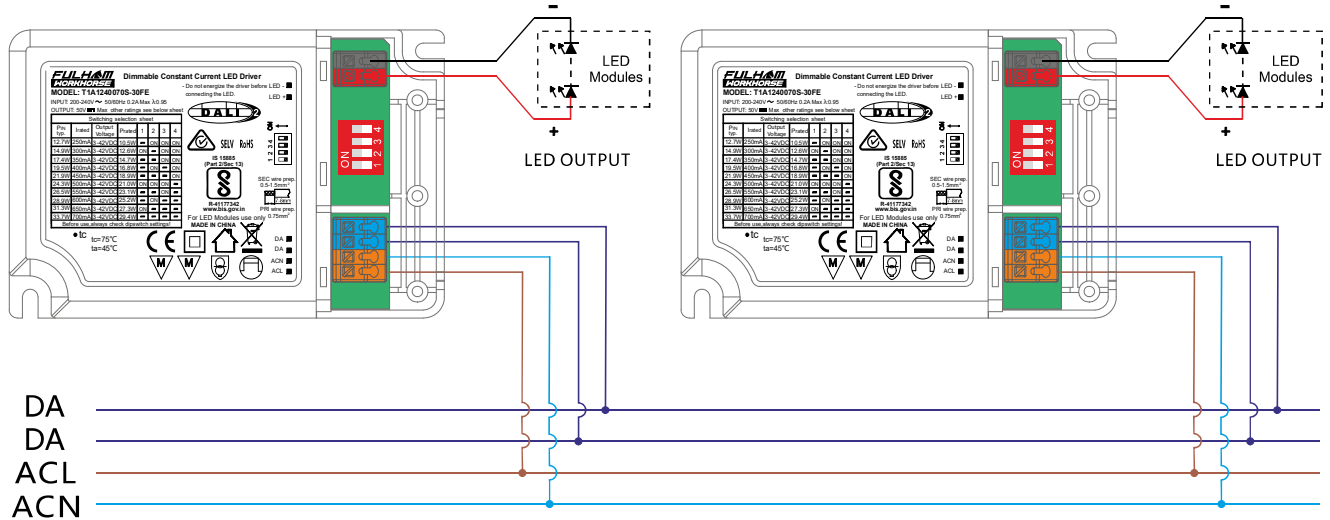
Lifetime vs. case temperature



Fulham extends a limited warranty only to the original purchaser or to the first user for a period of **03 years @ Tc 70°C** from the date of manufacture when properly installed and operated under normal conditions of use. For complete terms and conditions, please reference the Fulham Product Catalog ([www.fulham.com](http://www.fulham.com)). Due to a program of continuous improvement, Fulham reserves the right to make modifications or variations in design or construction to the equipment described. © Fulham Company Limited, All Rights Reserved.

### DALI dimming application

Wiring diagram



●●● Max. x64

Note: The voltage deviation of warm white and cool white light strings should be less than 0.5V

### Activating DALI control mode

- After installation according to the wiring diagram of DALI control application, the driver will automatically switch to the DALI control mode after receiving any DALI command.

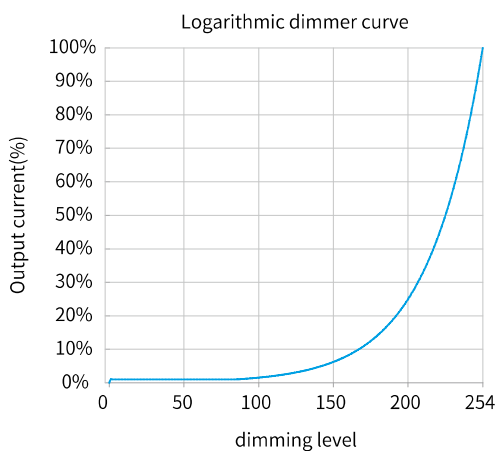
### Remarks:

- Standard DALI control line voltage range: 9.5V to 22.5V, type 16V.
- The two DALI control lines polarity-reversible.
- Max. 64 DALI drivers per DALI control line.
- The maximum distance length of the DALI control line is 300m at 2 × 1.5mm<sup>2</sup>.
- DALI bus can be wired together with any mains voltage cables, but separate wiring is recommended.

### Wiring distance vs cable size

Cable size	Distance
2 × 0.50mm <sup>2</sup>	max.100m
2 × 0.75mm <sup>2</sup>	max.150m
2 × 1.00mm <sup>2</sup>	max.200m
≥ 2 × 1.50mm <sup>2</sup>	max.300m

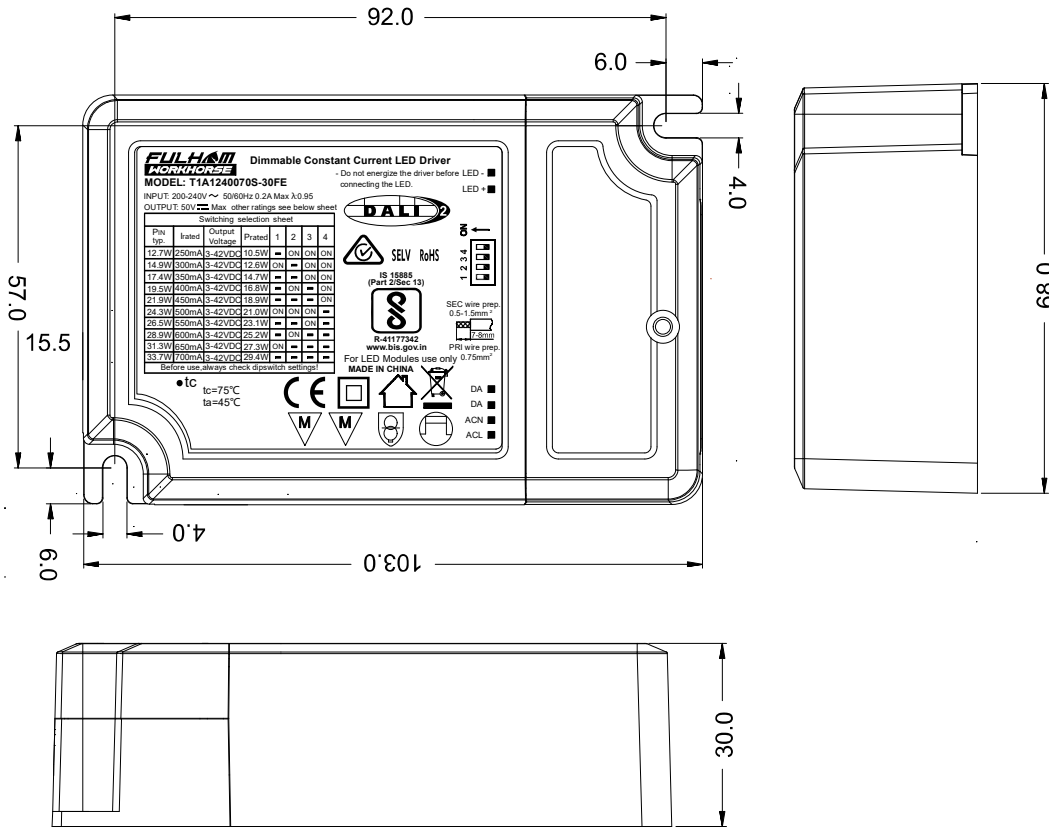
### Dimming curve



**Remarks:** The dimming curve can be selected by DALI configuration. The default is logarithmic dimming curve.

Fulham extends a limited warranty only to the original purchaser or to the first user for a period of **03 years @ Tc 70°C** from the date of manufacture when properly installed and operated under normal conditions of use. For complete terms and conditions, please reference the Fulham Product Catalog ([www.fulham.com](http://www.fulham.com)). Due to a program of continuous improvement, Fulham reserves the right to make modifications or variations in design or construction to the equipment described. © Fulham Company Limited, All Rights Reserved.

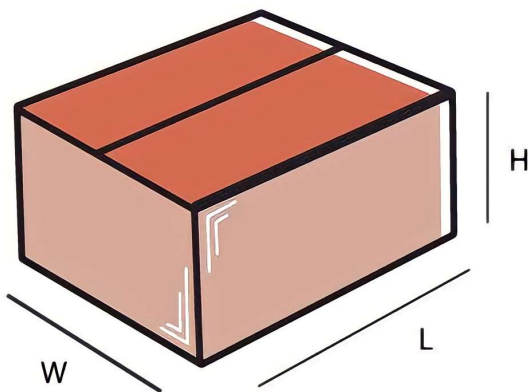
**Mechanical Data :**



**Note : All Dimensions are in mm.**

**Tolerance=±0.5mm**

**Packaging**



**Master carton**

OUTER DIMENSION		
L	W	H
490mm	340mm	165mm
Net Weight	Gross Weight	QUANTITY
8.96 kg	10.22 kg	64 pc.

**Installation Instructions:**

Connect Wires as per details given on the Driver Screen. Keep proper ventilation around the LED Driver and do not stack any object on it. Also a 10-15 cm clearance must be kept when the adjacent device is a heat source. Do not exceed the declared Hot spot temperature(Tc max) under any circumstances.

Fulham extends a limited warranty only to the original purchaser or to the first user for a period of **03 years @ Tc 70°C** from the date of manufacture when properly installed and operated under normal conditions of use. For complete terms and conditions, please reference the Fulham Product Catalog ([www.fulham.com](http://www.fulham.com)). Due to a program of continuous improvement, Fulham reserves the right to make modifications or variations in design or construction to the equipment described. © Fulham Company Limited, All Rights Reserved.