



- Constant Current LED Driver
- Multiple current selection through DIP switch.
- O/P Current - 250, 350, 450 OR 500mA
- Flicker Free :O/P Ripple current <5% (LF <200Hz)
- Output Wattage - 22W
- Output voltage range of 21~43Vdc
- Inbuilt Surge protection 4KV
- Suitable For Dry Locations
- Application
- Shop, Retail & Hospitality

General Specifications

Rated Input Voltage	220-240/230/240Vac,50/60Hz
Operating Input Voltage Range	120-310Vac,50/60Hz
Input Current	0.12A Max @ Full Load at Rated Voltage
Input Power	26W @ Full Load at Rated Voltage
Power Factor	>0.95 @ Full Load at Rated Voltage
THD	<10% @ Full Load at Rated Voltage
Efficiency	≥85% @ Full Load at Rated Voltage
Driver Type	Constant Current
Output Current	500mA ±10%, 450mA ±10%, 350mA ±10%, 250mA ±10%* **Refer DIP switch Table for O/P current selection
Output Voltage Range	21~43Vdc
No Load Output Voltage	55Vdc Max
Output Power	22W
Number of Output Channels	1 Channel
Output Type	Class II
Dimming Controller Type	NA
Dimming Range	NA
Ambient Operating Temperature Range	-20°C to 50°C
Max. Case Temperature	65°C
Input Surge Protection	L-N - 4KV as per EN 61000-4-5
Protections	Input Over Current : Non Resettable (Fuse) Input Over Voltage : Cutoff @ Vin 320±5%; Auto Recovery : Immunity - 320Vac for 48 hours & 440Vac for 48 hours Input Under Voltage : Shutdown <100Vac, Auto recovery Output Short Circuit : Auto Recovery (HICCUP Mode) Output Open Circuit : Auto Recovery (HICCUP Mode) Output to Ground short : YES Output Overload : YES Over Temperature : YES
Service Life	30,000 Hours @ Tc Max
Approvals / Class	SELV Equivalent ; Dry Locations
Warranty	03 Years
Weight	0.130 Kg

DIP Switch Chart :

I _{rated} (mA)	DIP Switch		P _{rated} (W)
	PIN 1	PIN 2	
500	ON	ON	21.50
450	ON	OFF	19.35
350	OFF	ON	15.05
250	OFF	OFF	10.75

Note : Suitable for Indoor application only

Fulham extends a limited warranty only to the original purchaser or to the first user for a period of **03 years @ Max Tc** from the date of manufacture when properly installed and operated under normal conditions of use. For complete terms and conditions, please reference the Fulham Product Catalog (www.fulham.com). Due to a program of continuous improvement, Fulham reserves the right to make modifications or variations in design or construction to the equipment described.
© Fulham Company Limited, All Rights Reserved.

Figure 1

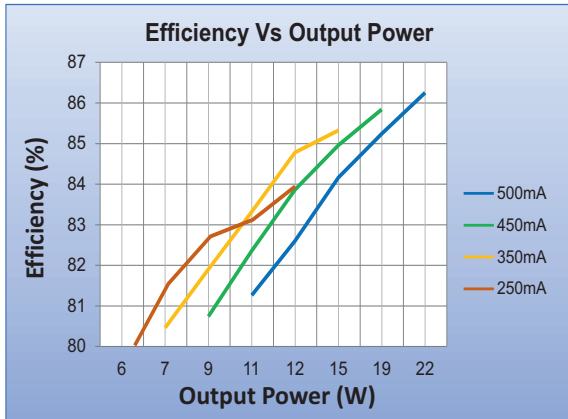


Figure 2

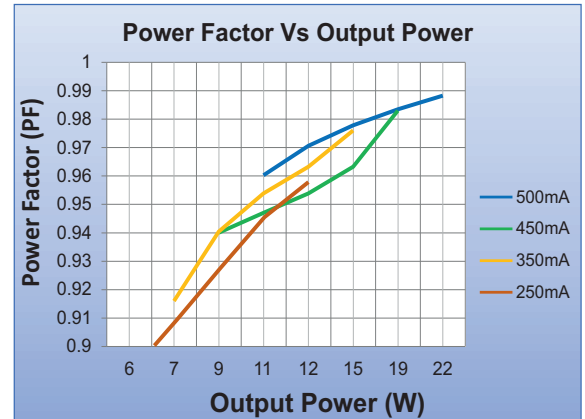


Figure 3

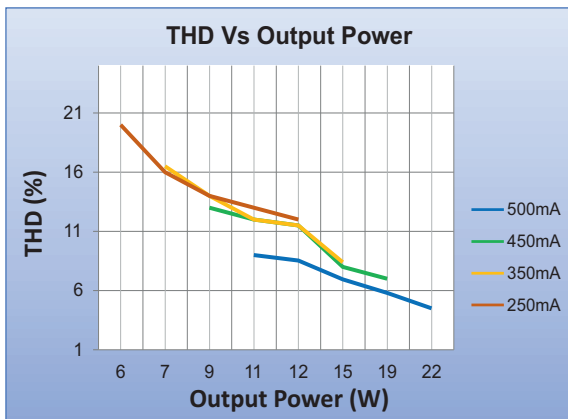


Figure 4

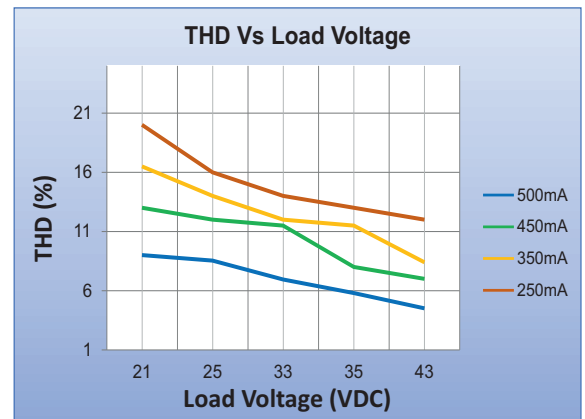


Figure 5

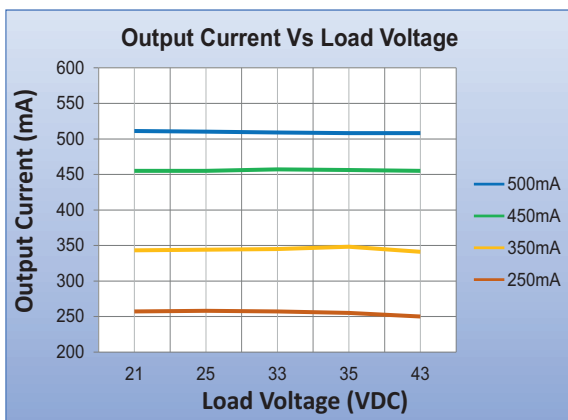
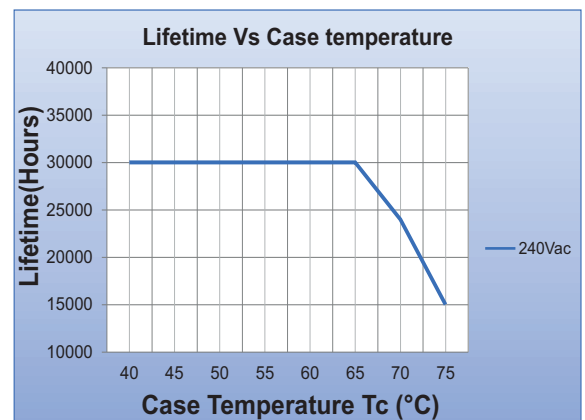
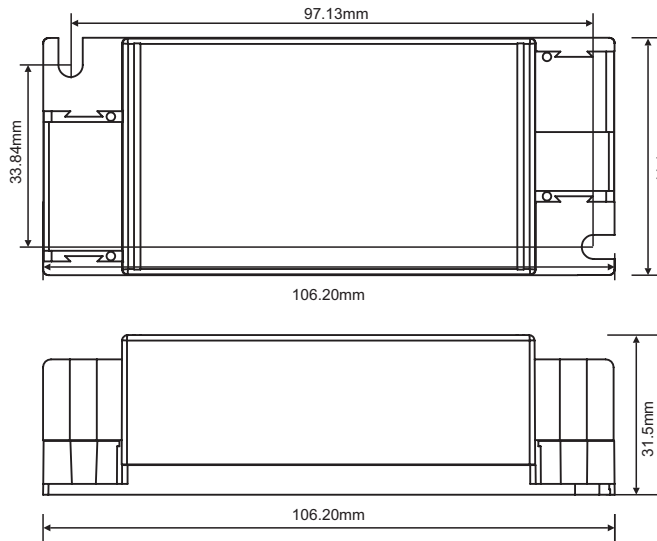


Figure 6

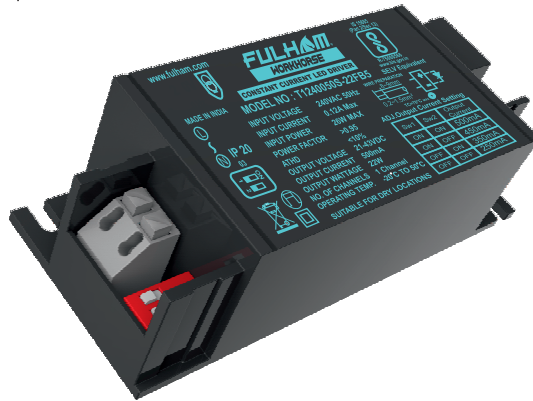




Mechanical Data



Product Image



Note : All Dimensions are in mm.

Tolerance=±0.5mm

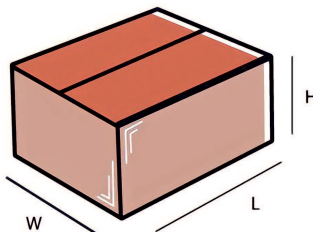
Wiring Diagrams



INPUT 2 PIN CONNECTOR	GREY	LINE
	GREY	NEUTRAL

OUTPUT 2 PIN CONNECTOR	RED	POSITIVE
	BLACK	NEGATIVE

Packaging

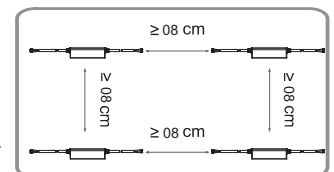


Master carton

OUTER DIMENSION		
L	W	H
230mm	220mm	160mm
Net Weight	Gross Weight	QUANTITY
6.50 kg	6.95 kg	50 pc.

Installation Instructions:

- The driver should be installed in a dry, acid-free, oil free, fat-free environment.
- Do not exceed the declared Hot spot temperature(Tc max) under any circumstances.
- ≥ 08 cm clearance must be kept between the drivers as per installation diagram, When multiple drivers used.



Fulham extends a limited warranty only to the original purchaser or to the first user for a period of **03 years @ Max Tc** from the date of manufacture when properly installed and operated under normal conditions of use. For complete terms and conditions, please reference the Fulham Product Catalog (www.fulham.com). Due to a program of continuous improvement, Fulham reserves the right to make modifications or variations in design or construction to the equipment described.

© Fulham Company Limited, All Rights Reserved.