



- Compact Constant Current LED Driver
- Multiple current selection through DIP switch
- O/P Current - 800, 900, 950 OR 1050mA
- Flicker Free: O/P Ripple current <5% (LF <200Hz)
- Output Wattage - 45W
- Inbuilt Surge protection 4KV
- Output voltage range of 21~43Vdc
- Suitable For Dry Locations
- Application
- Shop, Retail & Hospitality

General Specifications

Rated Input Voltage	220-240/230/240Vac,50/60Hz
Operating Input Voltage Range	120-300Vac,50/60Hz
Input Current	0.24A Max @ Full Load at Rated Voltage
Input Power	53W Max @ Full Load at Rated Voltage
Power Factor	>0.95 @ Full Load at Rated Voltage
THD	<10% @ Full Load at Rated Voltage
Efficiency	≥85% @ Full Load at Rated Voltage
Driver Type	Constant Current
Output Current	1050mA ±7.5%, 950mA ±7.5%, 900mA ±7.5%, 800mA ±7.5% *Refer DIP switch Table for O/P current selection
Output Voltage Range	21~43Vdc
No Load Output Voltage	55Vdc Max
Output Power	45W Typical
Number of Output Channels	1 Channel
Output Type	Suitable for Class II Fixtures
Dimming Controller Type	NA
Dimming Range	NA
Ambient Operating Temperature Range	-20°C to 50°C
Max. Case Temperature	75°C
Input Surge Protection	L-N - 4KV as per EN 61000-4-5
Protections	Input Over Current : Non Resettable (Fuse) Input Over Voltage : Cutoff @ Vin >300Vac, Auto Recovery : Immunity - 300Vac for 48 hours & 440Vac for 8 hours Input Under Voltage : Shutdown <100Vac, Auto recovery Output Short Circuit : Auto Recovery (HICCUP Mode) Output Open Circuit : Auto Recovery (HICCUP Mode) Output to Ground short : YES Output Overload : YES Over Temperature : YES
Service Life	30,000 Hours @ Tc Max
Approvals / Class	SELV Equivalent ; Dry Locations
Warranty	03 Years
Weight	0.130 Kg

DIP Switch Chart :

I _{rated} (mA)	DIP Switch		P _{rated} (W)
	PIN 1	PIN 2	
1050	ON	ON	45.1
950	ON	OFF	40.8
900	OFF	ON	38.7
800	OFF	OFF	34.4

Note : Suitable for Indoor application only
Optional Cable clamp for Independent Installation

Fulham extends a limited warranty only to the original purchaser or to the first user for a period of 03 years @ Tc Max from the date of manufacture when properly installed and operated under normal conditions of use. For complete terms and conditions, please reference the Fulham Product Catalog (www.fulham.com). Due to a program of continuous improvement, Fulham reserves the right to make modifications or variations in design or construction to the equipment described.
© Fulham Company Limited, All Rights Reserved.



Figure 1

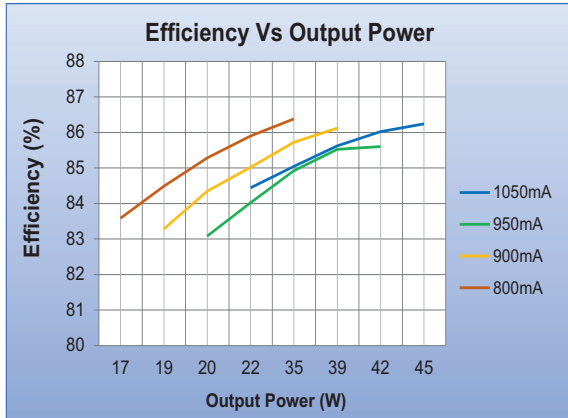


Figure 2

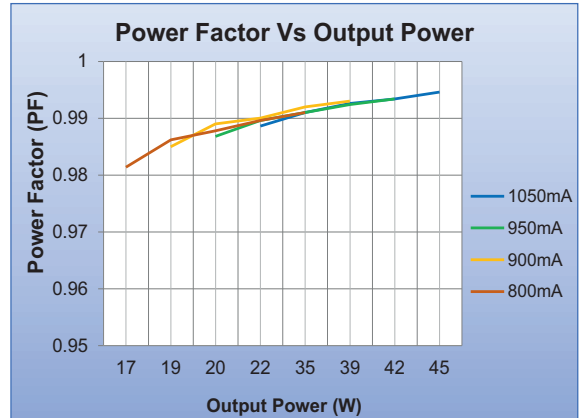


Figure 3

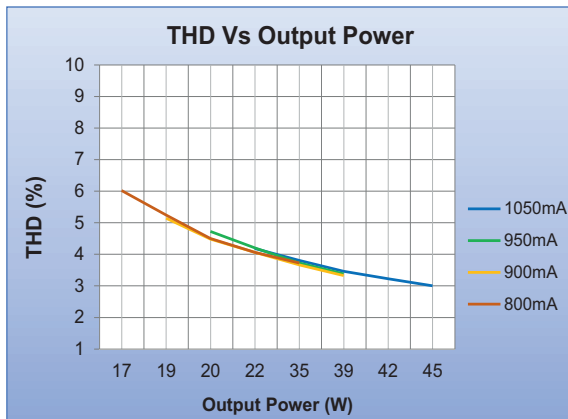


Figure 4

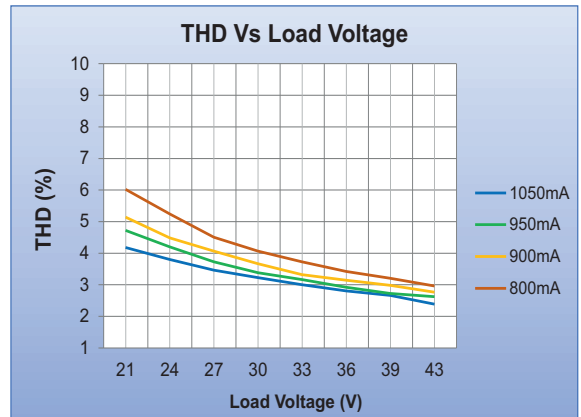


Figure 5

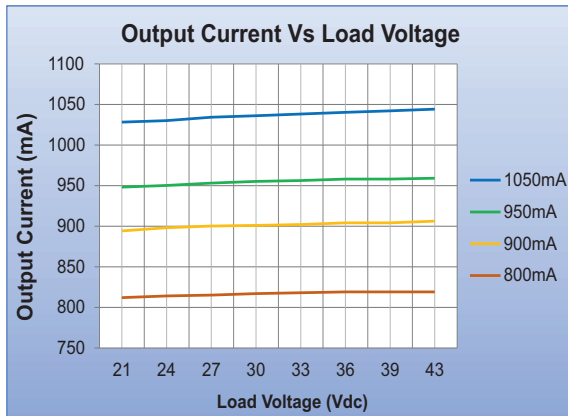
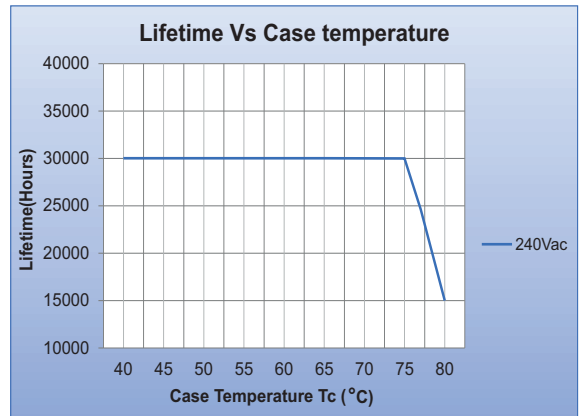


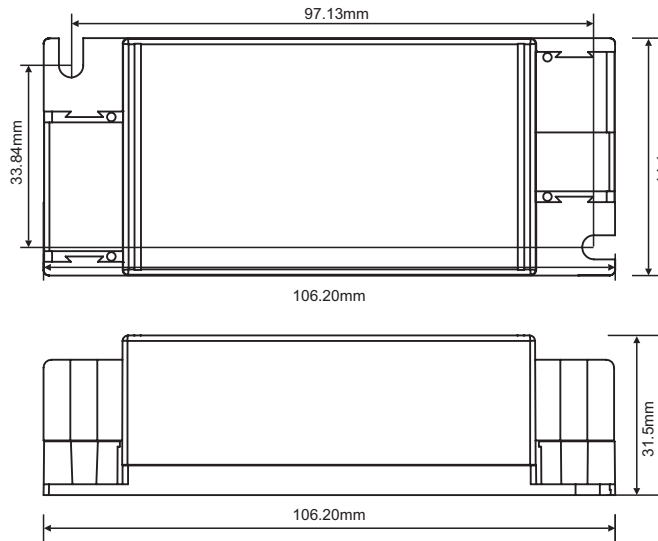
Figure 6



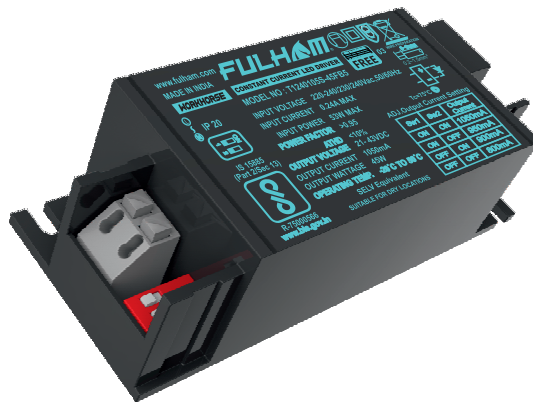
Fulham extends a limited warranty only to the original purchaser or to the first user for a period of **03 years @ Tc Max** from the date of manufacture when properly installed and operated under normal conditions of use. For complete terms and conditions, please reference the Fulham Product Catalog (www.fulham.com). Due to a program of continuous improvement, Fulham reserves the right to make modifications or variations in design or construction to the equipment described. © Fulham Company Limited, All Rights Reserved.



Mechanical Data



Product Image



Note : All Dimensions are in mm.

Tolerance=±0.5mm

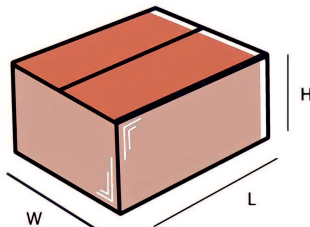
Wiring Diagrams



INPUT 2 PIN CONNECTOR	GREY	LINE
	GREY	NEUTRAL

OUTPUT 2 PIN CONNECTOR	ORANGE	POSITIVE
	GREY	NEGATIVE

Packaging



Master carton

OUTER DIMENSION		
L	W	H
230mm	220mm	160mm
Net Weight	Gross Weight	QUANTITY
6.50 kg	6.95 kg	50 pc.

Installation Instructions:

Connect Wires as per details given on the Driver Screen. Keep proper ventilation around the LED Driver and do not stack any object on it. Also a 10-15 cm clearance must be kept when the adjacent device is a heat source. Do not exceed the declared Hot spot temperature(Tc max) under any circumstances.

Fulham extends a limited warranty only to the original purchaser or to the first user for a period of **03 years @ Tc Max** from the date of manufacture when properly installed and operated under normal conditions of use. For complete terms and conditions, please reference the Fulham Product Catalog (www.fulham.com). Due to a program of continuous improvement, Fulham reserves the right to make modifications or variations in design or construction to the equipment described. © Fulham Company Limited, All Rights Reserved.