

# FHSCP-UNV3-5W-L-SD-A



## Emergency LED Driver

- Emergency LED Driver
- Universal Voltage: 100-347V~
- Output Voltage Range: 15-55V  $\overline{\text{---}}$
- Output Current: 333mA Max
- Output Wattage: 5W
- Output Type: LED Class 2
- Number of Output Channels: 1 Channel
- Dry and Damp Location

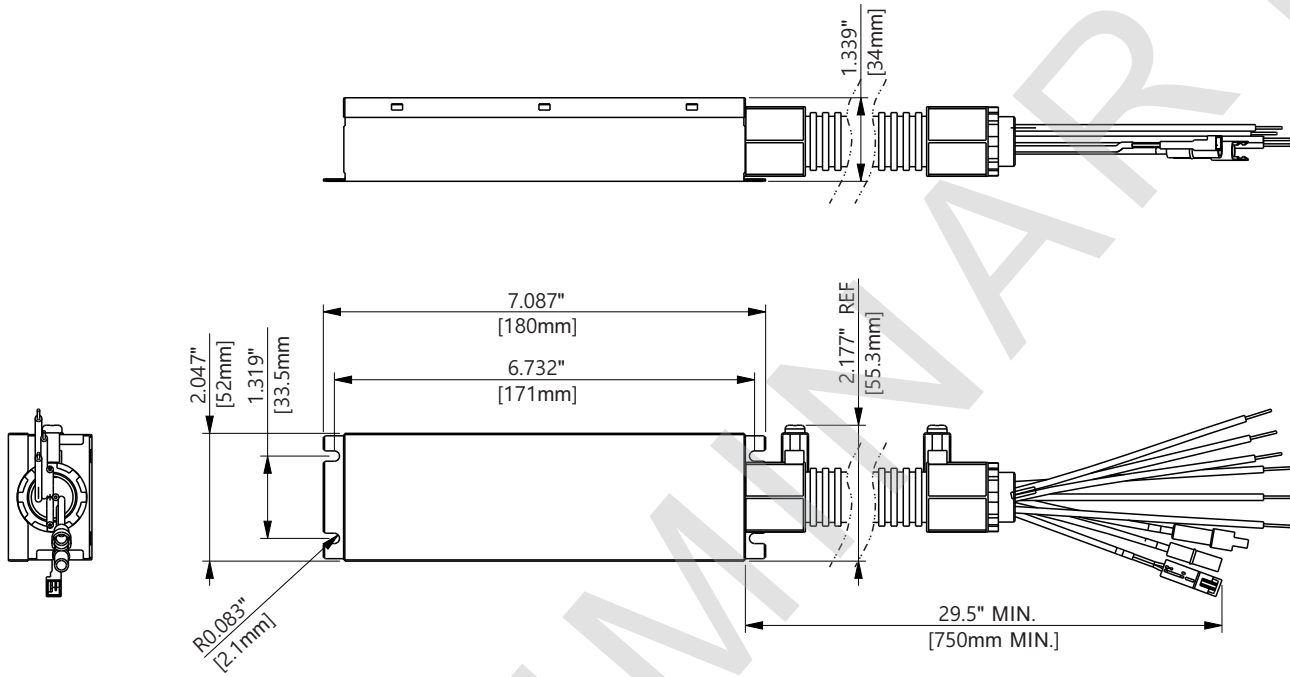
## General Specifications

|  |  |
|--|--|
| Input Voltage / Frequency                        | 100-347V~ , 50/60Hz  |
| Input Current                                    | <0. 12A  |
| Input Power                                      | <6.5W  |
| Standby Power                                    | 0.85W  |
| Input Power Pass-Through Rating (AC Driver Line) | 3A   |
| Max Output Rating (LED+ LED-                     | 3A, 55V Max  |
| Output Power                                     | 5W   |
| Output Voltage Range                             | 15-55V $\overline{\text{---}}$   |
| Output Current Rated                             | 0.333A Max   |
| Number of Output Channels                        | 1 Channel  |
| Test Switch                                      | Plastic Bi-Color Test Switch   |
| Input Surge Protection                           | 3KV/6KV Ring wave, 1KV/2KV Combine surge   |
| Emergency Mode Protections                       | Output Open Protection<br>Output Overload Protection<br>Output Short Circuit Protection<br>Output Temperature Protection |
| RFI/EMI  | FCC Part 15 ClassA   |
| Ambient Operating Temperature Range              | 0°C To 55 °C( 32 °F To 131 °F)   |
| Tc   | TBD  |
| Sound Rating                                     | A  |
| Battery Type                                     | Ternary lithium battery  |
| Battery Voltage                                  | 7.3V   |
| Battery Capacity                                 | 2600mAh  |
| Battery Rating                                   | 18.98Wh  |
| Battery Recharge Time                            | 24 Hours   |
| Battery Discharge Time                           | Min 1.5 Hours  |
| IP Rating  | IP20   |
| Test Switch Remote Mounting Distance             | 65.6' (20m) Max.   |
| Service Life                                     | 50,000 hours   |
| Warranty   | 5 Years From the date of manufacture when properly installed   |
| Safety Standards                                 | UL 924/UL 1310/CSA C22.2 No.141  |

# FHSCP-UNV3-5W-L-SD-A



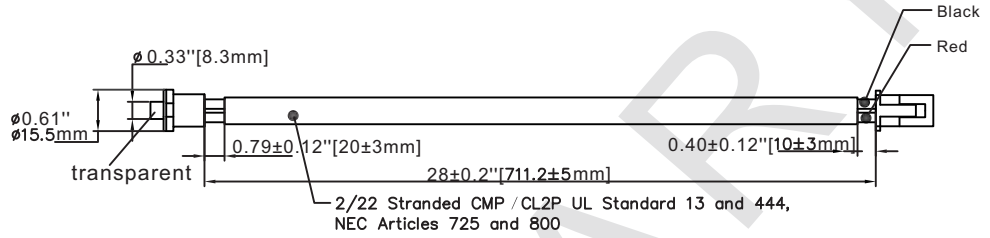
## Mechanical Data



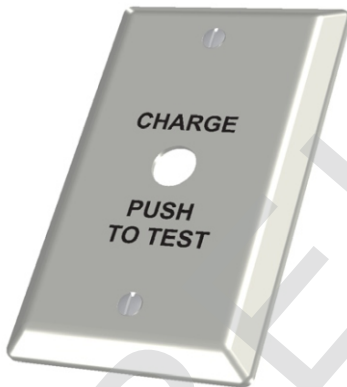
| Overall Dimensions |                    |
|--------------------|--------------------|
| Length             | 7.087"<br>[180mm]  |
| Width              | 2.117"<br>[55.3mm] |
| Height             | 1.339"<br>[34mm]   |

## Accessories

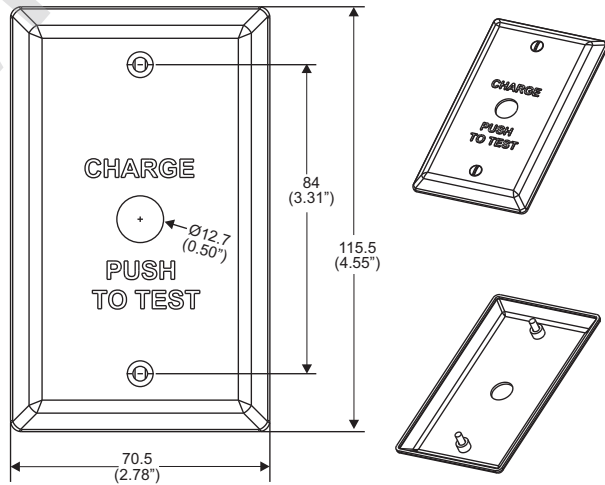
### Test switch wire



### Wall Plate: FHSWLPWH



Wall plate and screw color:  
white with black lettering

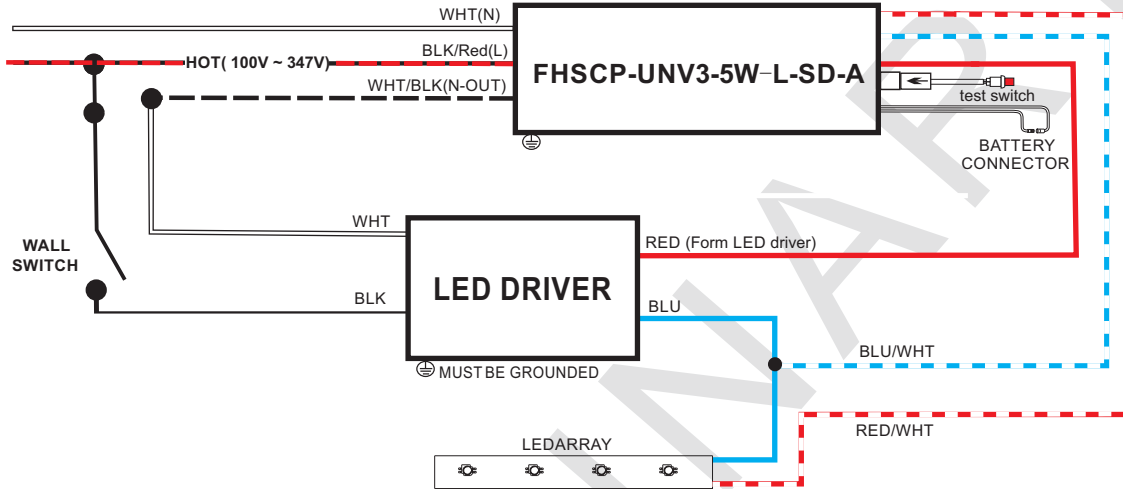


1. "Charge push to Test" plate
2. (2) 6-32 x 1/2" LG mounting screws

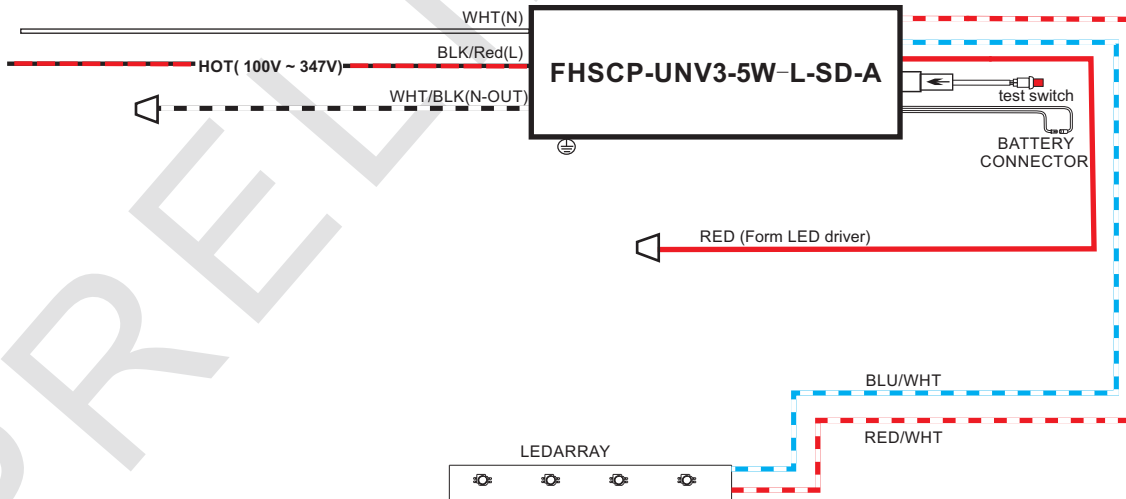
# FHSCP-UNV3-5W-L-SD-A



## Wiring Diagram



## Wiring Diagram (Emergency Only)



# FHSCP-UNV3-5W-L-SD-A



## Test Switch Indicator Status:

| LED Indicators Status                   | EM Driver Status / Mode   |
|---|---|
| ● Solid Green                           | System OK / AC OK (Self-Diagnostic Enabled or Disabled)                   |
| ⦿ Slow Flashing Red, 4s on / 1s off     | Battery NOT detected, check battery switch or connection                  |
| ⦿ Flashing Red, 1s on / 1s off          | Battery Failure, replace battery  |
| ⦿ Flashing Green, 1s on / 1s off        | Self-Diagnostic test underway   |
| ⦿ Slow Flashing Green, 0.1s on / 3s off | Normal working in EM mode   |
| ● Solid Red                             | No load or output over voltage protection triggered, Check LED connection |
| ● Solid Red                             | Over Current Protection   |
| ⦿ Flashing Green, 2s on/0.5s off        | Enables Self-diagnosis  |
| ⦿ Flashing Green, 0.5s on/2s off        | Cancel Self-diagnosis   |
| ⦿ Flashing Red, 1s on/4s off            | Over Temperature Protection   |
| ⦿ Flashing Red, 0.5s on/3s off          | Abnormal Power-on Under Self-diagnosis/Battery Voltage abnormal           |

## Test Switch Operations:

EM Test: Press and hold test button (1s) to enter EM mode for testing in normal AC powered.  
 Long press (10s) exit emergency mode.

# FHSCP-UNV3-5W-L-SD-A



---

## Guidelines

### Grounding

- Driver must be grounded by means of the Driver case.

---

### LED load

- Fulham's Hotspot Constant Power Emergency LED drivers are designed to drive passive LEDs, -COB's and -LED assemblies. Proper function is not guaranteed when (LED) loads with active components are used.

---

### Mounting / Cooling

- Above an output power of 8W, the driver needs to be mounted on a heat conductive surface of at least 40cm<sup>2</sup>. Always test if the surface is sufficient enough before installing the driver.

---

### Short-circuit protection

- In case of a short circuit the LED driver switches to protection mode. After the removal of the short-circuit the LED driver will Latch ,need restart AC Power.

---

### No-load Operation

- In no-load operation the output voltage will not exceed the specified open circuit output voltage.

---

### Hot Swapping

- This driver does not support hot swapping of the LEDs

---

### Battery Maintenance

- In order to maintain proper operation and warranty coverage, the battery must be recharged once per year prior to installation.

---

### Warranty

- Reference Fulham's limited Warranty: <https://cdn.fulham.com/PDFs/Limited-Warranty.pdf>

# FHSCP-UNV3-5W-L-SD-A



## Part Number Matrix

**FHS**

LED Driver

FHS = FireHorse HotSpot Driver

**CP**

Driver Type

CP = Constant Power

**UNV3**

Input Voltage

UNV3 = 100V-347V

**5W**

Power

5W = 5 Watts

**L**

Case Type

L = Long Case

**SD**

Special Features

SD = Self Diagnostic

**A**

Special Features

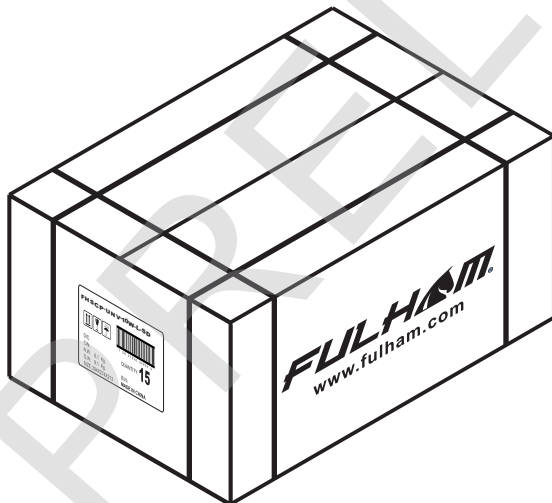
A = Conduit

## Product Image: LED Driver

FHSCP-UNV3-5W-L-SD-A

## Packaging

Master Carton



| OUTER DIMENSION |              |          |
|-----------------|--------------|----------|
| L               | W            | H        |
|                 |              |          |
| Net Weight      | Gross Weight | QUANTITY |
|                 |              |          |