



An Official Summary of Product & Company News from [Fulham!](#)

First the Fun... Highlighted "Video of the Quarter"

Our chosen video* wins for **HUMOR**.
This is dubbed on YouTube as the
"Funniest Horse Videos of 2024"...
See if you agree!

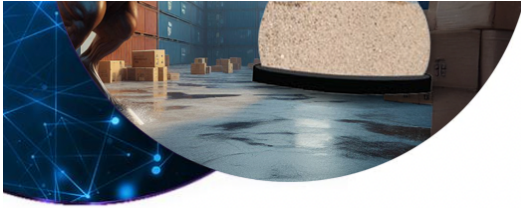
Consider submitting an *original* video for
use in future Illuminations. Email
[updates@fulham.com!](mailto:updates@fulham.com)

*Fulham is neither associated with, nor does it endorse, the owner
of this video.



Goodbye 2024... Prepare for 2025 (including possible tariffs) *Please Plan Ahead*

With the uncertainty of possible tariffs
on some imports, it will never hurt to
place orders as soon as you can.



We urge you to plan ahead to the greatest extent possible.

[Contact your Fulham RSM today!](#)

Mark Your Calendars & See You in NYC in March!

[LEDucation](#) will be upon us before we know it! We look forward to seeing you again at the New York Hilton Midtown.

[Reach out to us](#) with any questions in advance or to arrange times to meet.

[Click here for our event calendar](#)



Reminder! 4 Constant Power EM LED Drivers Discounted in Large QTY

These SKUs have flexible pricing when the order size allows.

[Contact us today](#) for these *immediately shippable* items, while supplies last!

[FHSCP-UNV-5WL](#)

[FHSCP-UNV-7.8WL](#)

[FHSCP-UNV-10.7WL](#)

[FHSCP-UNV-17WL](#)

New U.S. Distribution Featured Products Catalog! Online Now!

We've just published the 2025 version of our [Featured Products for Distribution catalog located here for download](#) and for onscreen



viewing from the [literature library](#).

In the [downloadable file](#), it offers convenient links to site pages. The printed version will be orderable via Customer Service in about a week using Part # DST-2025



Extra Extra! CM Buck in KY!

We're pleased to announce CM Buck now represents us in KY (except for Boone, Kenton and Campbell counties)!

CM Buck, a premier agency founded 84 yrs ago, has a deep history of innovation and approachability stemming from its small-town, family-owned roots. cmbuck.com/lighting

Service Alert – CNY Affecting Production Schedule Updates

Please note that the Lunar New Year is January 29th this year, and this affects availability of status updates on products shipping to us from China.

We expect resumption of normal production updates by early to mid February.



THANK YOU for Making Our Fluo Phase-Out Legislation Webinar a Success!

We appreciate your engagement level on our Q4 webinar about changes

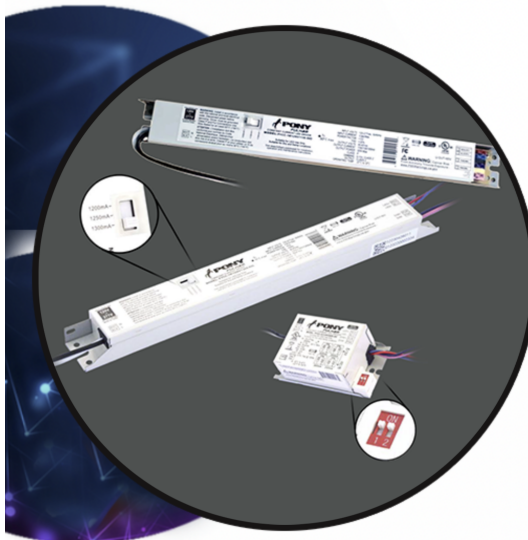


being enacted in various states and nationally related to fluorescent lamps.

This is now an unlisted video. [Reach out to your Fulham RSM](#) if you'd like to request access. Look out for an invite to the next one!

Launched! Non-Class 2, High Voltage EM LED Driver!

The [16W-HV FireHorse HotSpot \(FHSCP-UNV-16W-L-SD-HV\)](#) is specifically designed for *Non-Class 2* applications that operate LEDs with either high DC voltage or high current. The [16W-HV FireHorse HotSpot](#) connects directly to the LEDs inside a luminaire, offering an efficient, reliable emergency solution for higher voltage applications such as linear high bay, large surface-mounted and canopy luminaires.

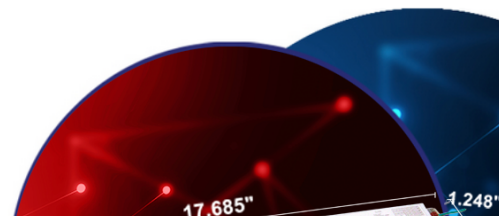


PYCC Selectable Current Line EXPANDED!

Fulham is proud to have EXPANDED its [PONY line of selectable current drivers](#) to now include 4 compact models and 10 linears, with connector options that include versions with wires on both sides, as well as on just one side and with push-in connectors on the other.

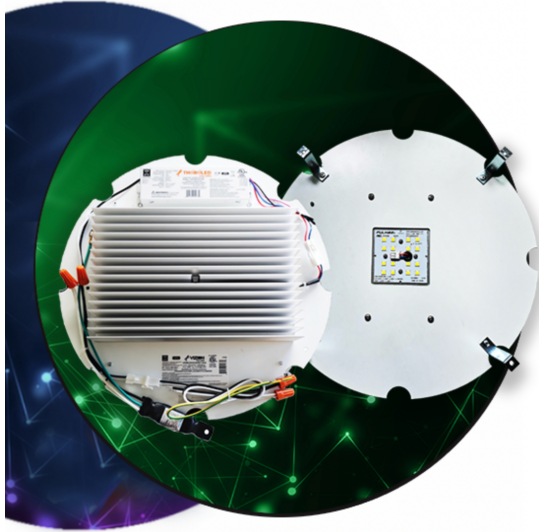
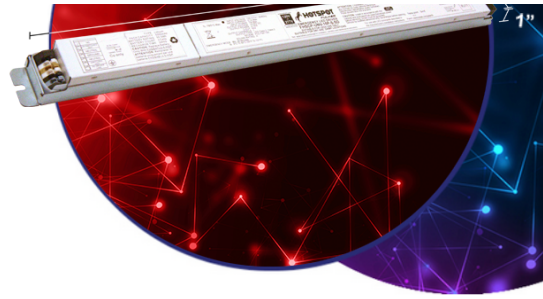
Have a look at details and specs [HERE](#)

15W Stick Programmable EM LED Driver LAUNCHED!



We are pleased to now bring you an additional programmable stick form Constant Power Emergency LED Driver with connectors, for In-Fixture Use. The [FHSCP-UNV-15P-S-SD](#) is perfect for troffer, strip and vaportight fixtures.

[Click here for added details today!](#)



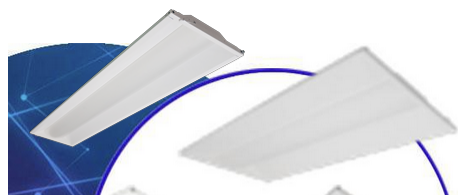
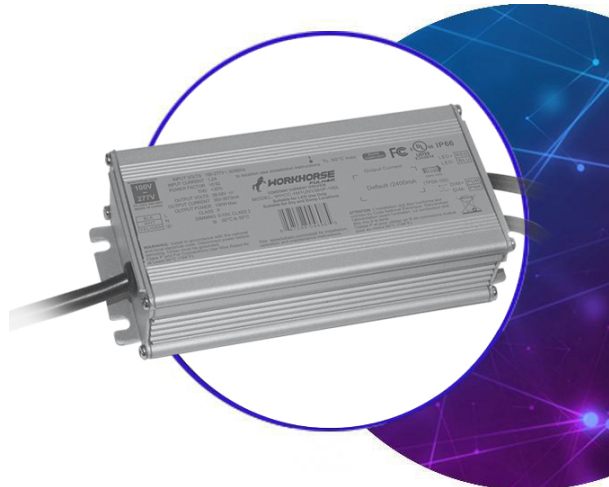
Unveiled! 14" Round LED Retrofit Kit for Garage & Gas Station Canopies

Our new round Vizion UNV LED retrofit kit is an ideal replacement for applications using 70-250W HID, such as parking garage fixtures and gas station canopy fixtures.

[More details are available here now!](#)

Reminder: WorkHorse Constant Current (WHCC) Class 2 Programmable IP66 Drivers *Launched!*

We've released two new [outdoor WorkHorse WHCC drivers](#). IP66, Type HL for dry and damp locations. 0-10V Dimming from 100%-10%. Output Voltage Range: 28-56VDC. Small for their performance (5.71" x 2.6" x 1.44")! Output current ranges of 350-2100 and 350-2670mA, respectively. [Full details & spec sheets here](#)



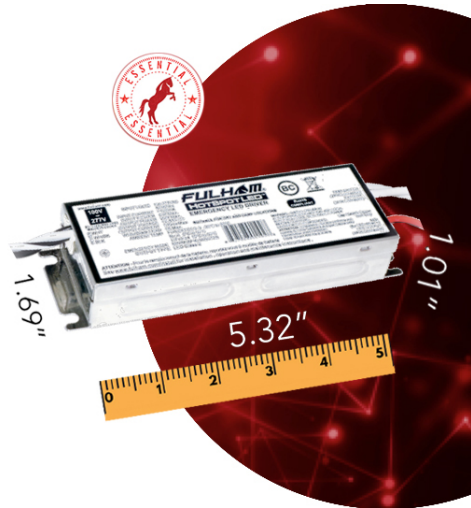
IN STOCK! [LED Panel & Troffer Retrofit Frame Kits](#) Installable From Below, 90 CRI!



We are excited to offer VividHorse CCT-selectable (3500-5000K) retrofit kits for 2x2, 1x4 and 2x4 panels and troffers! Ours boast an impressive **90CRI** and are completely **installable from below, without opening the ceiling**. This makes them not only quick to install, but also far more safe and convenient by avoiding any harmful older building materials in the ceiling that may also need to be disposed of properly if discovered. [Click here for info](#)

Smallest 4W Constant Power EM Driver! [Watch the Video!](#)

[Click here for details](#) about this mini Fulham HotSpot in-fixture 4W Emergency Driver with integrated battery, part number [FHSCP-UNV-4W-L](#). Smallest in the industry at just 1.01"x1.69"x5.32"! Recommended applications include troffers, strips, canopies, wall packs, vapor-tight fixtures and anyplace where adding EM capability requires the ability to fit a tiny item inside the fixture! [Video here](#)

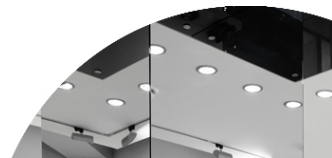


Don't See It? We can make it! **Custom Product Development:** [Watch the Video Here](#)

By leveraging Fulham's Global R&D team and extensive library of Essential technology platforms, Fulham's capabilities can speed your time to market while lowering engineering investments in new products – [especially LED Modules!](#)

- [Customization](#)
- [Quick Turn Samples](#)
- [Rapid Product Development](#)

Product Spotlight: FireHorse 25W & 50W MicroInverters are Here!



The [FireHorse Micro-Inverter / Emergency Power Supplies](#) are a reason to get excited! They work with any technology type (not just LED) for either one or a series of fixtures up to 150W (for the 25W) or 320W (for the 50W) in normal operation to deliver power in emergency mode at 25W or 50W, respectively, for 90 minutes. Factory or field installable! [Visit the product page](#) or watch a [comparison video here](#)



Reminder: EliteControl IoT Gateway

Fulham's [EliteControl IoT Bluetooth® Gateway \(CTGATBPOE\)](#) extends your mesh network with internet access. It allows data collection from Bluetooth mesh lighting networks and transmission to the cloud for review and control. [Brochure](#) | [Spec Sheet](#)

Bluetooth is a registered trademark of Bluetooth SIG, Inc.

For more information on any of the products or topics referenced above, contact your Fulham Sales Representative or Fulham Client Services at order@fulham.com or 323-599-5000. To find a U.S. Distributor, [click here](#). To find a DST representative, [click here](#). For Fulham's OEM Sales Managers by territory, [click here](#).



Fulham | 12705 S. Van Ness Ave. | Hawthorne, CA 90250 US

[Unsubscribe](#) | [Update Profile](#) | [Constant Contact Data Notice](#)